

MVAL

Art & the Artist

June 2014

Newsletter for the Mid-Valley Arts League



Scholarship Raffle
MVAL Banquet June 25th

PRESIDENT'S MESSAGE



It seems September blended into Christmas and merged into April and too quickly June appeared; where did it all go? Ten months seem to have flown by in a rush and we are all looking forward to two months of well-deserved R and R.

The big awareness for me has been to realize how many generous and talented people we have in Mid-Valley Arts League. We exist and thrive, because of volunteers who have served beyond the call of duty. The *Members Exhibit* with Laurie was a big success and please do not forget to pick up your paintings on June 22nd. *Saturday in the Park* with Julie, Kay and Mark was well attended and we delighted in seeing wonderful artists create magical works at a great venue. Each month, Demonstrators with Nancy delighted and taught us. Workshops with JoAnn were decidedly helpful and stretched us to grow. Our Membership with Ike continues to grow and this will only assure the continued success of MVAL. Our Scholarship efforts with Marge, Barbara and Fred have expanded and we are blessed with about 20 painting donations, included are Milford Zornes and George James paintings. The last general meeting will be what has been nicknamed, The Raffle Extravaganza; our meeting will also include the installation of our 2014-2015 Board. Finally, we close the year with a June Banquet with Saralyn and Chet, to enjoy and learn about each other on a personal level; this celebration will be a great event with music, magic and good food and friends. We work together all of the time; however, the Banquet is a time to discover who these volunteers were, before MVAL. Our members have been and continue to be very talented.

The unsung heroes are not to go unmentioned. Our Art and the Artist newsletter is second to none, thank you Joyce. Refreshments are always the best, thank you Mary Ann and friends. The camera and projector have continued to serve us well, thank you Roy. The sound system has always been there, thank you Fred. The artists of the month have delighted us, thank you Kate. Records have been maintained, thank you Margaret and Mary. Our monies have come out to the penny, thank you Deanne. Financial overview and legal obligations have been met, thank you Jan. The Art Coop has continued to flourish with its' own exhibit, thank you to 32 pairs of hands. Bylaws need to be brought into the 21st century, thank you Julie. New guests have been welcomed graciously, thank you Michi.

I am sure I have forgotten to say thank you to other generous hearts that have stretched and given much more than was expected, so I apologize for not mentioning you, but know, that I truly appreciate you. For all of you I am grateful and I continue to grow with you. See you in September and remember to keep those brushes wet!

Armando Ruiz
President

MEETING DATES

JUNE GENERAL MEETING

The June General Meeting will be June 18th - 7:30 PM
Church of the Good Shepherd
400 W. Duarte Rd., Arcadia, CA 91007-6819

SEPTEMBER BOARD MEETING

September Board Meeting will be held September 3rd - 7:30 PM
Live Oak Park, Temple City

MID-VALLEY ARTS LEAGUE 2013 - 2014 BOARD OFFICERS

President ----- Armando Ruiz
First Vice President (Programs)
----- Nancy Shiershke
Second Vice President
(Membership) ----- Ike Ikeda
Third Vice President
(Exhibits) ----- Laurie Mangiagli
Treasurer ----- Deanne Ruiz
Recording Secretary
----- Margaret Rothwell
Corresponding Secretary
----- Lee Johnson
Parliamentarian ----- Julie Crouch

Membership in MVAL:

Membership is open to artists and art lovers of all levels.

If you are interested in membership contact: Ike Ikeda- 626-332-7782

M_ikeda@roadrunner.com

WEBSITE:

midvalleyartsleague.org

mval.org

Website Editor: Roy Genger

Art & the Artist Editor:

Joyce Nunamaker

All articles and announcements to be included in the Art & the Artist may be sent to:

253 Windsong Court

Azusa, CA 91702

626-334-1646

E-mail: janunamaker@verizon.net

Deadline is the first Wednesday of the month. If you have an event that takes place in the first half of the month - be sure to get it in the month before.

JUNE MEETING

SCHOLARSHIP RAFFLE

The June Raffle is here! We will try to be set up by 6:30 on Wednesday, June 18, so you may come early and view the prizes. There will be approximately 22 pieces of original art, and many interesting books.

A timetable for the evening:

The scholarship and grant recipients will be introduced first. Art from the various school programs will be on display in the front. We will break a little early for refreshments, and for one last opportunity to purchase raffle tickets at the table in the rear.

Raffle

The Raffle will begin after the break. Ticket winners will be drawn from the tumbler. A winning ticket allows one to choose any Raffle prize remaining—once previous ticket winners have made their choices. All of the Raffle prizes are in the front of the room—on the table, on steps or on the wire-frame easels. The Raffle will proceed until all the raffle items are gone.

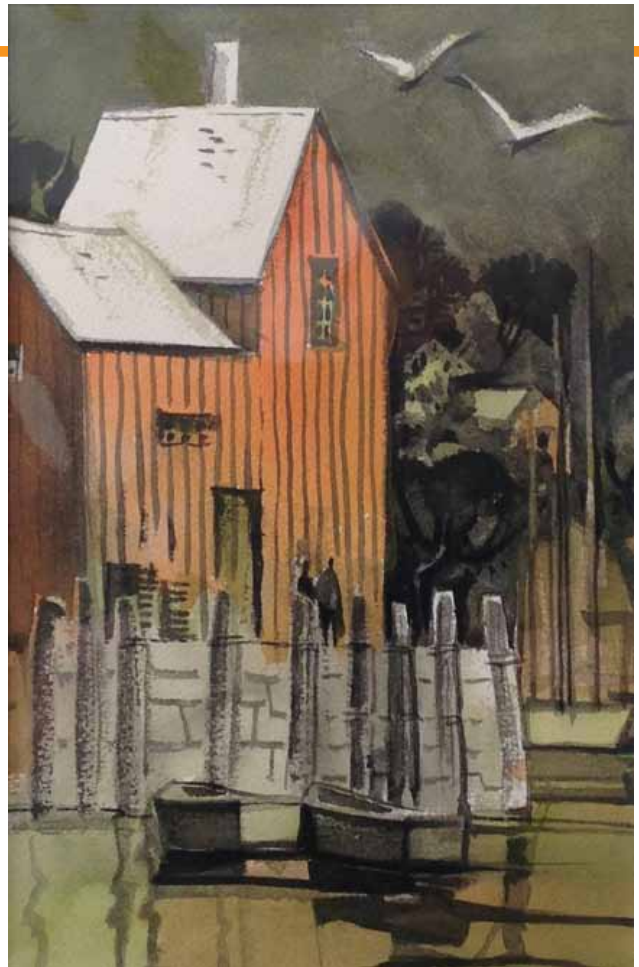
In past years, some members have brought books and other Raffle prizes to the June meeting. We ask that you not do so this year. The committee has spent considerable time organizing the Raffle so as to move it along smoothly. We have no way of documenting and acknowledging, or properly handling new donations on Wednesday evening. Keep your donations for next year!

Silent Auction

Scholarship has received another generous donation of a painting for the silent auction. Hal and Maria Baker (Maria's father was Milford Zornes) have donated a Milford Zornes watercolor (see below). It depicts a harbor scene in Maine. The painting is signed on the back.

The silent auction table is in the rear. Each of the four paintings has a separate minimum starting bid and a minimum raise. You are welcome to begin the bidding at any time. Bidding will terminate at a precise, agreed upon, time.

The four winners are the individuals with the final—and highest—bids.



Milford Zornes



Nancy Shiershke



George James



Jim Burns



Dick Tarkington

ART OF THE MONTH

THERE WILL BE NO "ART OF THE MONTH" IN JUNE DUE TO THE SCHOLARSHIP RAFFLE.

Kate McDaniel
Art of the Month Chairman

WORKSHOPS

BRENDA SWENSON upcoming workshops:

- **July 14, 15 & 16, 2014** *Sketching on Location*, Santa Barbara, California
Contact Brenda: SwensonsArt@gmail.com
- **August 15, 16 & 17, 2014** *Negative Painting Watercolor* Montrose, CA, Contact Brenda: SwensonsArt@gmail.com
- **August 23 & 24, 2014** *Negative Painting with Watercolor* Mountain Arts Network, Lake Arrowhead, CA
Contact Darlene: darbek26@yahoo.com (909) 337-7810
- **October 20 - 30, 2014 *New Date Added!** *Tuscany En Plein Air*, 10-Day workshop Lucca, Italy, Contact: abbondanzatoscana@gmail.com
Website: www.abbondanzatoscana.com
Workshop Details: <http://www.abbondanzatoscana.com/swenson14.htm>

CHRIS VAN WINKLE workshop:

- PAINTING IN THE CANADIAN ROCKIES
Fly to Vancouver June 25. Travel, site see and paint, Fly out of Calgary July 6.
Contact Chris for more details 805-772-8875
email: chrisvw@charter.net

MORE SUMMER CLASSES AND WORKSHOPS

Jump Start into Watercolor Basics

Saturdays June 28, July 12, 19, 26, 2014
A workshop for the new to fairly new painter.
Citrus College Continuing Education Program
Class Info/Enrollment at: <http://citruscollege.augusoft.net>
or Citrus Office: 626-852-8011
Instructor: Fran Ortiz ortezhomestudionAverizon.net

Studio 511 Presents

3 to 5-day intensive acrylic/mixed media workshop with **Chris Cozen**
July 17-21
Optional Day 1 - Acrylic Basics
Core Days 2,3 & 4 - composition, style and development of a minimum of 2 canvases.
Optional Day 5 - guided studio day/personal study with Chris
Fee: \$650 for full 5 days, \$475 Core days and \$150 for day 1 or 5 purchased separately.
Contact Chris at chriscozen@aol.com
or 626-399-1117 (cell) / 626-395-9501 (home)

ARTIST NEWS & SHOWS

Lynne Fearman is having a solo show at the Sierra Madre City Hall. Reception will be June 5th, Thursday 5:30-7:30.
The show will include 25 of her paintings.
232 W Sierra Madre Blvd, Sierra Madre, CA 91024
626-355-7135

Lynne's painting "*Arlington in Bloom*", will be in the "Splendor from the Garden" show at **Galeria Gitana**
120 N. Maclay Ave. suite E,
San Fernando. (818) 898-7708
Show dates are:
April 26th thru June 14th.
Other Artists include: **Chuck Kovacic, Jane Thorpe, Patty O'Hearn & James Wisnowski** among others who join with us at our Thursday paint-out group.

JoAnn Formia will have a solo show of her work to be displayed in the **South Gallery of the Chaffey Community Museum of Art**, the show titled "SPICE" includes selections that range from traditional representational transparent watercolors to the abstractions of line, shape, form and color.
JoAnn was recently named Artist of the Year for 2014 by CCMA.
Show Dates : June 26 – August 24, 2014
Opening Reception, Sunday, July 13, 2-4 pm
Museum Hours Thursday – Sunday 12 to 4 pm
217 S. Lemon Ave.
Ontario, CA 91761
909-463-3733

ABOUT THE COVER

This month's cover art, "Prague at Dusk" was painted by Fealing Lin.

MVAL DUES

Dues deadline is May 31, 2014 and will become delinquent after June 30th, 2014.
Single membership: \$35
Double membership: \$45

Make a check payable to: MVAL and mail it to:
Minoru "Ike" Ikeda, Membership Chairman
2038 Paseo Susana
San Dimas, CA 91773

NEW MEMBERS

Mariana Rodriguez Los Angeles, CA



Mariana has taken private classes in watercolor and oils. She enjoys painting dogs, cats and people. She also creates gold and silver jewelry. Mariana is joining MVAL to enjoy the company of other artists.

Joseph Apablaza Glendale, CA



Joseph "Pepe" Apablaza has retired from a Graphic Design career. His wife, Judie, convinced him to join in her classes in watercolor. He has been taking classes from April Drew Foster at Highland Park Art Club for the past two years and has also taken classes from Kathy Metz, Barbara Medford and Jay Ewing. He has also taken workshops from Tom Fong. As a beginner he is exploring every watercolor subject matter - portraits, landscape, still life and plein air. He is still searching for a style, with his graphic design background his tendency is to be very realistic, being more spontaneous and loose is his goal. After 2 years of studying the ways of watercolor, Pepe feels that he needs to step up to the challenge of improving his skills by being a member of a group that has members of high caliber from whom he can learn from.

Judith Apablaza Glendale, CA



An Otis Art Institute scholarship was a boost to an young beginning artist, but parents insisted on a more "practical" academic direction. After a career as a college professor in the field of Psychology, Judie came full circle and returned to her first love, watercolor. She prefers plein air painting where she can see the three-dimensional impact in the ever-changing display of the natural world. Her interpretation is unique and she believes it has a stylized, luminous quality. She has studied with Chris Van Winkle, Fealing Lin, Brenda Swenson and other well-known California watercolor artists. Judie seeks learning from professional artists that are self-taught as well as those who have pursued a long academic background in the visual arts.

IN MEMORIAM - MEL ATWELL

It is with much sadness that we report the passing of Mel Atwell. Mel was a life-time member of MVAL and had joined the club in 1976. Even though we hadn't seen as much of him at meetings in the past few years, Mel had remained an active member and was the featured cover artist in January of this year.



Mel Atwell holds a picture of the Navy hospital ship on which he served during World War II.

The following is from an announcement from his family with information about a memorial service:

"Please join us to celebrate the long and wonderful life of Mel Atwell who entered Eternity at 12 noon on Saturday, April 19th, 2014 just shy of his 92nd birthday. We have chosen the location of Brookside Park, Pasadena, CA as it holds a special meaning in that it is where his family lived when he was born.

At that time a Tent City was located there. He also played a lot of baseball there with his brothers and the Robinson brothers. We chose the Jackie Robinson Field because they were school and baseball buddies. Dad asked us to plan his celebration out a couple months, which would be June. One of his granddaughters is getting married in June, so we have planned Dad's celebration for July. He would not mind... he always wanted what worked out best for the family."

July 19, 2014 - Time: 2:00pm - 5:00pm
Jackie Robinson Field, Brookside Park
360 n. Arroyo Blvd., Pasadena, CA 91103
In Lieu of Flowers, donations can be made to:
https://salsa4.salsalabs.com/o/50823/p/salsa/donation/common/publiv/?donate_page_KEY=7782

R.S.V.P: happybirds chirp@aol.com
or by telephone 949-223-4833 Robyn



Art & the Artist Cover
Sketch from January
by Mel Atwell

MVAL JUNE BANQUET & SUMMER SUPPER!

Wednesday, June 25, 2014

6:30 p.m.

The Oaks of Pasadena

2954 East Del Mar Blvd. (between Madre St.
and San Gabriel at El Nido), Pasadena 91107
(Park on El Nido)

fun visiting, hardy drink, good vitals
plus a
Surprise Trickster
that will
Amaze, Confound, Delight and Mystify
for all that pays their money!

Please bring a small matted painting to participate in painting exchange.

Cost: \$27.00 per person, checks payable to Mid-Valley Arts League
Mail to: Chet Specht, 2956 East Del Mar #244, Pasadena, CA 91107

Name _____

_____ Tickets at \$30.00 each. Amount Enclosed _____

Check # _____ Cash _____

INSPIRATION

JUNE - Mark Wood

MVAL CRIT GROUP

The MVAL Crit Group will continue to meet in July and August.

The MVAL CRIT GROUP is open to anyone who wants an opportunity for growth and feedback as an artist. Everyone is to bring at least one painting, complete or nearly complete, to share and discuss in a friendly constructive environment. Invite your artist friends.

Crit Night is on the SECOND WEDNESDAY of the month

Time: 7:30 PM – 9:00 PM

Location: Studio 2310 in Duarte, 2310 Central Ave, Unit 13.

Directions: 210 FWY, Mt. Olive/Duarte exit, right on Huntington Dr., right on Crestfield Dr. right on Central Ave.

Contact: Mark Wood - 626.825.0464.

REMINDER:

Avoid pesky storage/transport fee

Pick up your artwork from the MVAL Anniversary Show!

Any artwork not picked up will be assessed a \$25 fee so please remember to pick yours up or make arrangements for someone else to do so.

Pick up is on Sunday, June 22nd from 1-3 pm.

Chaffey Community Museum of Art

217 S. Lemon Ave.

Upland, CA 91761

The exhibition was a SMASH and we've been asked to come back next year! Wahoo!!! Dates for next years exhibition will be in the September newsletter...have a fun and productive painting summer...keep your brushes moving :)

COLORFUL ELEPHANT

There will be **NO white elephant table** at the meeting in June.

THURSDAYS IN PLEIN AIR

To confirm or ask questions call Call Lynne Fearman
(626) 355-7562 cell: (626) 487-6566

Bring lunch or take a chance there will be a place to buy.

Meet at the designated location at 9:00am and paint till 12:00.

At noon we gather for lunch and sharing of sketches and paintings. After lunch is the critique/share.

The critiques are informative and instructional. In the event of rain the paint-out will be canceled.

We have done our best to give accurate directions. Since we are based in San Gabriel, our directions stem from there.

It is each person's responsibility to carry a map, GPS, or double check directions.

JUNE 12th - THE HOUSE OF MOLLY MUNGER & STEVE ENGLISH

450 So. San Rafael, Pasadena. 91105. call only if you get lost!
(626) 799-4543. Beautiful home over-looking the Arroyo and the Colorado St. Bridge. First come first served on the parking. Otherwise park on the street. Bring your lunch.

JUNE 19th - THE RICHARDSON HOUSE & Lizzy's Trail Inn, SIERRA MADRE

165 E. Mira Monte, Sierra Madre, 91024. Located between Baldwin and Mountain Trail, next to Turtle Park. Take the 210 freeway to the Baldwin off ramp, head north to Foothill, make a left on Foothill and a right on Baldwin. Continue on north at Mira Monte make a right. Parking at the end of the street.

JUNE 26th - UNION STATION, LOS ANGELES

Great chance to draw people and paint in the courtyard!
Olvera Street is across the road along with the park across the way.
Meet for lunch at the Union Station Courtyard to the south.

JULY 3rd - FRANK BONELLI REGIONAL PARK, SAN DIMAS

120 Via Verde, San Dimas. Take 210 Fwy to the Via Verde exit to Raging Waters Drive, turn right. Follow signs for Raging Waters. Meet at the SAIL BOAT LAUNCH area. Bring lunch

JULY 10th - OLD MILL, SAN MARINO

1120 Old Mill Road, San Marion. From Huntington turn north on S. Oak Knoll Ave, at Old Mill turn right. Oil painters must bring a tarp. Bring lunch.

JULY 17th - CRYSTAL COVE, LAGUNA BEACH

The park is located off Pacific Coast Highway between Corona Del. Mar and Laguna Beach, California with easy access from I-5, 405 and 73. Crystal Cove State Park is located just north of Laguna Beach, California and just south of Corona Del Mar.

JULY 24th - PECK ROAD PARK, ARCADIA

From Live Oak and Peck Road in Arcadia, go South on Peck Rd to Clark Street, continue almost one block, look for small sign on your right, just a dirt like drive way into park.(easy to miss) Water in the lake with good reflections and mountain view. Rest rooms and picnic tables, bring lunch.

JULY 31st - LEONIS ADOBE in Calabasas,

off the 101 going north. It's next to the Sagebrush Cantina.5950-5966 Canoga Avenue, Woodland Hills, CA 91367, USA Take the 134 freeway west to the 101 North. Exit at the Canoga Ave. off ramp. Turn right onto Canoga Ave. Destination will be on the right.

AUGUST 7th - SANTA ANA BOTANICAL GARDEN,

CLAREMONT 1500 N. College Ave. Take the 210 Fwy to Towne off ramp. Go south to Foothill, make left on Foothill, go past Indian Hill St. 1 block to College St.(small street on your left, easy to miss.) will be long narrow road to parking lot. Arrange to meet there for lunch, no food allowed in garden. Entrance fee.

AUGUST 14th - NEWCOMB'S RANCH, Angeles Forest

Take the 5 Freeway North to the 210, then take the 210 Freeway north to California Highway 2. Turn right, and after 27 miles of glorious twisties, Newcomb's will be on the left. Plan to eat lunch there.

AUGUST 21th - PORTS O'CALL SAN PEDRO

1190 Nagoya Way San Pedro, CA 90731 the 110 freeway south to Gaffey off ramp, make a left on 1st Street, right on Harbor. Follow the signs to the Village. Eat there or bring your lunch.

AUGUST 28th - GRIFFITH PARK OBSERVATORY

Take the 5 Freeway south to Los Feliz exit to the right head west on Los Feliz continue to Commonwealth Dr. make a right and continue to the top. Bring lunch.



Ratindra Das Workshop With an Eye for Design in Watercolor

June 26-28, 2014

The focus of this workshop is on designing a painting. It will be based on concept and imagination. A well designed painting does not happen by accident. It's a deliberate effort by the artist in representational as well as in non-objective painting. Personal vision in a painting is both analytical and intuitive. Outline or a set of guidelines are just that! These are not all inclusive.



There are limitless possibilities when it comes to an eye for design in watercolor.

For more information about Ratindra Das visit, www.RatindraDas.net



Ratindra Das Workshop

This three day workshop is geared toward intermediate to advanced students. It is limited to 15 people.

Dates: Thursday to Saturday, June 26-28, 2014
9:00am to 4:00pm.

Location: Church of the Good Shepherd Community Room, 400 West Duarte Road, Arcadia, CA 91007

Fee: \$300 MVAL Members / \$325 Non-members

A deposit of \$100 must be submitted with registration. Registration is based on receipt of registration and deposit. Final payment is due by June 5, 2014.

NO REFUNDS AFTER June 16, 2014.

REGISTRATION

(Check payable to: *Mid-Valley Arts League*)



NAME _____

ADDRESS _____

CITY/ZIP _____

PHONE _____

EMAIL _____

Ratindra Das Workshop, June 26-28, 2014

Enclosed is my check for: \$ _____

Check one: MVAL Member Non Member

Mail to: JoAnn Formia, 2062 E. Washington Blvd., Pasadena, CA 91104

Questions: 626.797.8562 / aimrof@aol.com

Judy Morris Workshop

September 18-20, 2014

Judy earned her B.S. and M.S. degrees in art education from Southern Oregon College, in Ashland, Oregon. She has taught art for 30 years prior to her retirement to become a full-time professional watercolorist.



Her work hangs in public and private collections from California to New York, Canada to Mexico and also Europe.

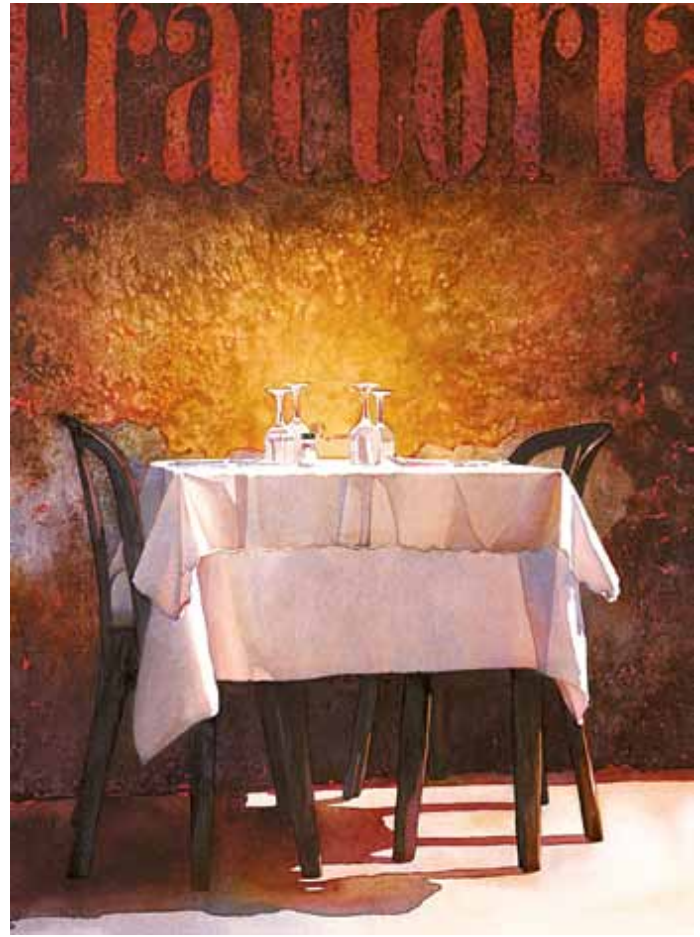
Her work has been published in many books and magazines.

Judy paints by designing her painted shapes. She feels that the design is

more important than painting realistic details.

The subjects she paints are recognizable but not painted in a photographic manner.

Judy's work has been described as abstract but intimate.



Judy Morris Workshop

This three day workshop is geared toward intermediate to advanced students.

Dates: Thursday to Saturday, September 18-20, 2014

Hours: 10:00am to 4:00pm.

Location: Church of the Good Shepherd Community Room, 400 West Duarte Road, Arcadia, CA 91007

Fee: \$300 MVAL Members / \$325 Non-members

A deposit of \$100 must be submitted with registration. Registration is based on receipt of registration and deposit. Final payment is due by September 6, 2014.

NO REFUNDS AFTER September 10, 2014.

REGISTRATION

(Check payable to: *Mid-Valley Arts League*)



NAME _____

ADDRESS _____

CITY/ZIP _____

PHONE _____

EMAIL _____

Judy Morris Workshop, September 18-20, 2014

Enclosed is my check for: \$ _____

Check one: MVAL Member Non Member

Mail to: JoAnn Formia, 2062 E. Washington Blvd., Pasadena, CA 91104

Questions: 626.797.8562 / aimrof@aol.com

MAY MEETING



Demonstration - Jane Thorpe



Artist of the Month - Alan Marriott