

MVAL

Art & the Artist

April 2010

Newsletter for the Mid-Valley Arts League



**April Demo: Winsor Newton Art Materials Demonstration
with Craig Antrim**

MVAL Anniversary Show Winners

Saturday in the Park with the Masters... coming soon!

**MID-VALLEY ARTS LEAGUE
2009 - 2010
BOARD OFFICERS**

President ——— Mark Wood
First Vice President (programs)
———— Saralyn Loweinstein
Second Vice President
(Membership) ——— John Goodno
Treasurer ——— Minoru "Ike" Ikeda
Recording Secretary
———— Julie Crouch
Corresponding Secretary
———— Nancy Dorn
Parliamentarian
———— Richard Gutschow

Membership in MVAL:
Membership is open to artists and
art lovers of all levels.
If you are interested in membership
call: John Goodno 626-351-9189

WEBSITE:
midvalleyartsleague.org
or mval.org
Website Editor: Roy Genger

Art & the Artist Editor:
Joyce Nunamaker

All articles and announcements
to be included in the Art & the
Artist may be sent to:
253 Windsong Court
Azusa, CA 91702
626-334-1646 - phone and fax
E-mail: janunamaker@verizon.
net

Deadline is the first Wednesday of
the month. If you have an event that
takes place in the first half of the
month - be sure to get it in the month
before.



PRESIDENT'S MESSAGE

As expected, the 57th Anniversary Exhibition was a success. Member participation was outstanding. Thanks to all those who submitted work and to all those who offered their time and effort to coordinate all the elements that need to happen to make it all work.

The judge, Joanna Mersereau, was impressed with the consistent quality of artwork and wished she could have given out more awards. Congratulations to Lynne Fearman who received the 'Best of Show' award.

The next MVAL annual event, 'Saturday in the Park with the Masters', is coming up Saturday, May 8. This is a unique MVAL event that gives members as well as the general public an opportunity to mingle with accomplished artists and watch how they approach plein air painting. Plan to attend, and bring a friend!

See you soon.

Mark Wood
President

APRIL GENERAL MEETING

The April General Meeting will be April 21st - at 7:30pm
Church of the Good Shepherd
400 W. Duarte Rd., Arcadia, CA 91007-6819

MAY BOARD MEETING

The May Board Meeting will be held:
Wednesday, May 5th, at 7:30 PM
Live Oak Park, Temple City

Craig Antrim Winsor Newton Artist Materials Demonstration

The best art always makes you forget you are looking at art. The word picture always means, to me, that it is of some thing. I like my work best when it seems that no one made it, that it as always existed. Painting is a simultaneous experience, not a sequential one. You are flooded with information that takes time to shift through and absorb. What happens, however, in that shock of experience is the direct transference of spirit. It is beyond language and involved the entire body. From the beginning of my conscious visual experience of the world, the only direct avenue was abstract. It was independent of and equal to other experiences. It had potential of placing me at the "center of the turning world" so that I could hear that "still small voice."

Craig Antrim is a college level art teacher and abstract painter. He is going to share his expertise using Winsor Newton Art Materials - with free product for all attendees. This should be interesting, fun and informative!

Saralyn Lowenstein
Program Chairman

IN MEMORIAM

GEORGE HANFT

It is with sadness that we bring you word of George Hanft's passing on Sunday, April 4, 2010.

George was a Past-President and life-member of MVAL. He was a popular teacher, having taught at Art Center College of Design and more recently at Citrus College where many MVAL members took watercolor classes from him.

He will be greatly missed in our art community.

Information for the service is as follows:

Location: Pierce Brothers, 1136 E. Las Tunas Drive, San Gabriel, CA
(between San Gabriel Blvd. and Rosemead Blvd, south side of street)

Date: Saturday, April 10.

Time: 12 noon with a reception following at the mortuary

Cards can be sent to George's wife Pat Hanft, 5822 N Agnes Ave, Temple City, CA 91780

EDUCATION AND HONORS:

MFA - Claremont Graduate School, Painting/Drawing, 1970

BA with Honors - University of California, Santa Barbara, Art, 1965

Honors Program - University of California, Santa Barbara, 1963-65

Ford Foundation, Experimental Program Instructors for College (EPIC), UCSB, 1963-65

California State Fellowship - Claremont Graduate School, 1969-70

EXHIBITIONS: (SELECTED)

- 2009 - San Pedro Chamber of Commerce, "Speculations", Solo - San Pedro, CA
- Mt. St. Mary's College, "Insight/Inside LA", Group - Los Angeles, CA
- 2008 - Chapman University, "About Abstract", Group - Orange, CA
- 2007 - CSU Fullerton, "Alchemy: the Cross Projects", Solo - Fullerton, CA
- 2006 - Santa Ana College, "Sacred Realm: The Spiritual in Art", Group - Santa Ana, CA
- 2005 - El Camino College, "The Tree of Life", Group - Torrance, CA
- 2004 - The Loft, "CONTACT_Con-3DECC6841 \c \s \l Craig Keith Antrim, Interference", Solo - San Pedro, CA
- 2003 - El Camino College, "about face", Group - Torrance, CA
- Studio 343, "CONTACT_Con-3DECC6841 \c \s \l Craig Keith Antrim, Crosses", Solo - San Pedro, CA
- 2002 - Angels Gate Cultural Center, "I'm Back", Solo - San Pedro, CA
- Arts Manhattan, "Close Proximity", Group - Manhattan Beach, CA
- Square Blue Gallery, "Abstract Ideas", Group - Newport Beach, CA
- Square Blue Gallery, "Self Portraits", Group - Newport Beach, CA
- JKD Gallery, Group - Santa Monica, CA
- El Camino College - "Lead into Gold", Group - Torrance, CA
- 2001 - Orange Coast College, "Different Strokes", Group - Costa Mesa, CA
- El Camino College, "Aprons", Group - Torrance, CA
- 1999 - Armory Center for the Arts, "radical past: contemporary art & music in Pasadena,

SHIRLEY DURBIN

It is with sadness that we bring you news of the passing of Shirley Durbin a fellow artist and friend. Shirley had been a joyful addition to the Thursday Plein Air painters for many years. She always brought enthusiasm, laughter, energy and excitement to everything thing she did. She will be greatly missed.

Hold her husband and family up in thought and prayers. Cards can be sent to her husband John at 136 El Nido Avenue, Monrovia, CA 91016

Memorial Service held Saturday, April 10, 2010 at Faith Lutheran Church, San Dimas, CA .

In lieu of flowers, Shirley requested before she passed that donations be made to The Partnership Scholars, a non-profit organization that gives students in California a life-changing opportunity to turn the dream of a college education into reality.

Partnership Scholars' Foundation
c/o Douglas Zook
Chapel of Remembrance
600 E. Foothill Blvd.

WORKSHOPS

Brenda Swenson Workshops:

June 12-26, 2010, Limoux, Southern France, Watercolor Travel Workshop

Website: www.montfaucontours.com

July 23, 24, & 25, 2010, Negative Painting with Watercolor, 3-Day Workshop

VIVA Gallery, Sherman Oaks, CA

Contact Brenda at:

(626) 441-6562 or Brenda@SwensonsArt.net

ART OF THE MONTH

To make the monthly showing of your work at our meetings we need more than four artist bring in a painting.

There is a assign theme but not necessarily required to be followed. So with that in mind the title for this month will be "Greening of California".

Themes for months to come:

May "Flowers in Bloom"

June "Vacation Time"

Chet Spect

Art of the Month Chairman

ARTIST'S NEWS & SHOWS

Christel Mackinnon's painting, "Land of Navajo" has been selected for the National Watercolor Society, All Member Show at the NWS Gallery, 915 S. Pacific Avenue, San Pedro, CA May 2, 2010- May 29, 2010

JoAnn Formia had her entry "Southern California Coast" accepted into the 143rd American Watercolor Society's Annual Exhibition, the show opened Tuesday, April 6, 2010 and continues through May 2, 2010, at the Salmagundi Club, 47th Fifth Ave., New York, NY.

Fealing Lin has a show at the *Crain Art Gallery* -

March 8th - April 17th, 2010

Mon - Thurs 10 am - 9 pm, Fri - Sat 10 am - 5 pm

Sunday 1 pm - 5 pm

Crowell Public Library, 1890 Huntington Drive

San Marino, CA 91108 (626) 300-0777

Vicki Thomas is participating in a show ROMANCE AND

WHIMSY at Mind Shop Books

49269 Golden Oak Dr., Suite 103, Oakhurst CA from Thursday, April 1st to May 30th, 2010.

Hours are: Wed. 10-2:00PM, Thurs. 11-1:00PM,

Fri. 10-2:00PM, and Sun. 11:00-Noon. Please contact Rever-

end Kim Haley for information: 559-760-6165, or Mind Shop Books at 559-642-4616.

ARTIST'S NEWS & SHOWS

Francesca Brayton will have an Exhibition at the **Corner Gallery** in the Huntington Beach library during the month of April. She will be there every Saturday from 1-4.

Linda Fullmer will show new watercolor paintings at

Alhambra City Hall Art Gallery, April 1 through 29.

The reception for this show, "A Brush With Life", on Monday, April 12th, from 6-9pm, is open to all.

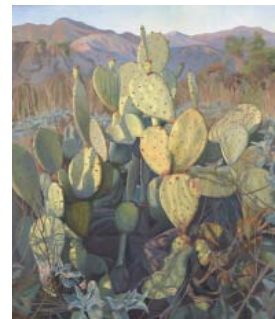
Beverly Squire will be exhibiting her series of monoprints at the **Creative Arts Group Gallery** in Sierra Madre.

Her work will be on display March 29 through June 4, 2010.

Lee Edward's painting titled "Circular Cactus" was accepted into the Oil Painters of America 2010 National Juried Exhibition of Traditional Oils. The painting is 30" by 24." This show will be held this year at the Legacy

Gallery in Scottsdale, Arizona from April 30 through May 31, 2010. There will also be an article which shows my painting and includes a brief interview in the May issue of the American Art Collector magazine which will be available the middle of April.

Also, Lee's Ring Festival painting "Erda Warns Wotan" 30" by 30", will be exhibited with the California Art Club Ring Festival LA exhibition at Fine Arts Building, 811 W. 7th Street, Los Angeles, CA 90017 from May 10-June 4, 2010.



Brenda Swenson is the featured artist at the 34th *Annual Festival of Western Arts*, April 23-25, 2010. Art show and events are held at the newly restored historic Walker House, 121 North San Dimas Ave, San Dimas. Saturday Brenda is giving a lecture/demonstration. Come see the "Quick Draw", auction, plein air event... Saturday and Sunday. For details visit www.sandimasarts.com or call (909) 599-5374.

Mid-valley Art League members **Shirley Manning** and **Michi Ikeda** received Purchase awards at Redland Art Associations Annual Multimedia Mini Show. Shirley and Michi's watercolor paintings were purchased by Redland Community Hospital. Paintings will be hanging at the hospital after the show.

Joyce Nunamaker will be performing at the Renaissance Pleasure Faire with her British Isles folk quartet, "Wren of Iniquity".

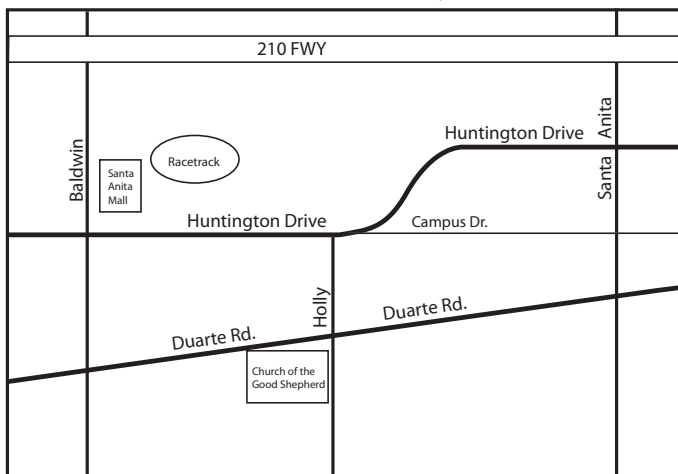
Faire is at Santa Fe Dam, Irwindale. Weekends April 10th - May 23rd.

"Wren of Iniquity" showtimes: 11am & 12:30pm at Royal Music Hall Stage, 3pm at Corazon Stage.

For more info: <http://www.renfair.com/socal/>

MEETING LOCATION

The Church of the Good Shepherd
400 West Duarte Road, Arcadia
at the corner of Duarte Rd. and Holly.



SHOW OPPORTUNITIES

East Valley Art Association 2010 Open Juried Art Show

Covina Women's Club

128 South San Jose Ave, Covina, Ca.

Show Dates

Saturday May 8th 1-5 Pm Wine and Cheese Reception

Sunday May 9th 12-4 Pm Refreshments

Sunday May 9th 3 Pm Awards Ceremony

Take-In Friday May 7th 10 Am to 7 Pm

Pick-up Sunday May 9th 4-4:30 Pm

For More Information Contact

Mary Ann Bourke at 909-860-2375

or Mary Dobozy at 909-861-9144

San Gabriel Fine Arts Assoc. is having an open show.

Registration is Thursday April 22nd @ 2 p.m.-8:p.m.

and Friday the 23rd 8:00 a.m.-12 noon.

the show is that Saturday & Sunday

Pick-up is Sunday at 4:00

Winners will be shown in the GLASS ROOM, 320 So.

Mission Drive for the month of April thru May 23rd.

entry fees are \$10 for members and \$15 for non-members.

It's at the Grapevine just north of the San Gabriel Mission

324 S. Mission Dr., San Gabriel (corner of Mission Dr. and

Santa Anita St.

COLORFUL ELEPHANT TABLE

Bring your unused art supplies and books. Mark everything well with price and your name and provide a container for money.

GOOD WORKS BY MVAL

Thanks to **Daryl Bryant** for bringing tablets to the February meeting to be donated to the developmentally disabled adult students taking part in the **City of Pasadena's Adaptive Recreation Program**. In spite of their learning difficulties these students produce amazing art work for their annual exhibit, usually held in September.

Jackie Scott, Adaptive Recreation Specialist, has visited Mid Valley and in the past we have supported the program. Supplies are always welcome. If you have paints, markers (especially markers), paper, brushes etc. that you cannot use, I will be happy to deliver them to Jackie. Please bring them to MVAL meetings or call me.

Thanks to Carla Gutierrez who donated sheets and rolls and LOTS of paper to the program following last month's meeting. Jackie was overwhelmed with "thank yous" on behalf of her artists.

We hope to sponsor publication of the exceptional catalog for their annual exhibit, usually held in September. The cost is \$500 which we hope to raise through individual contributions. If you are interested in supporting this important event for developmentally disabled adults you can bring your donation to the next meeting or call me.

Thank you on their behalf!

Shirley Manning, 626/797-1659, shirlesm@earthlink.net

Watercolor Sampler at Wellness

Beginning last February MVAL members began visiting the Wellness Community in Pasadena, offering a "Watercolor Sampler" for people with cancer attending Wellness.

At the first session, Shirley Manning, with an assist from JoAnn Formia, worked with seven ladies, some of whom had never held a paintbrush before. John Goodno hosted a second session on a very rainy Saturday. John Byram took his talents there on Wednesday, March 3. JoAnn Formia was painter-of-the-day Wednesday, March 10, and Richard Gutschow presided on Saturday, March 20. Jan Wright was the leader on Wednesday, March 24. The response from those who attended has been very positive. When asked why she signed up, one painter said, "I came because I wanted to have fun. I want to forget for awhile."

These sessions are opportunities for people with cancer to step outside themselves and enjoy a brief time of color, shapes and lines. Richard was so enthusiastic that he is working with Wellness to lead a sequential learning experience starting soon.

For more information, please contact

Shirley Manning, 626/797-1659, shirlesm@earthlink.net

THURSDAY'S IN PLEIN AIR paint out

Questions or to confirm call Walter McNall (626) 446-1066
cell (626)664-0397

Bring lunch or take a chance there will be a place to buy
lunch.

Meet around 9:A.M., usually break for lunch, some stay and
paint.

In case of rain we will cancel the paint out.

e-mail: mcnallthatsall@sbcglobal.net

****Special Notice****

We have been invited to participate in an event at the Ar-
lington Garden in Pasadena May 8th from 10 a.m. to 2 p.m.
At the event, you may sell paintings, sketches... that were
created at or inspired at the Arlington Garden. Anyone who
wants to sell their artwork is welcome to hang it on a trellis
that they will provide or we are welcome to bring our own
easels. Prices must be clearly marked and the Garden will
take a 25% cut for the Garden's Endowment Fund. If you are
interest please contact Jill Polsby at polsby@yahoo.com

APRIL 15 th, ARLINGTON GARDENS, PASADENA

295 Arlington Dr. Pasadena. Exit 210 or 134 fwy at Orange
Grove. Travel south to Arlington Dr. and turn left. Garden is
on the corner of Arlington Dr. & Pasadena Ave. If you are not
familiar with this community garden I think you would be
pleasantly surprised. No rest rooms.

APRIL 22nd, ARLINGTON GARDENS, PASADENA (again)

APRIL 29th, ARROYO SECO PARK, PASADENA

Exit freeway at Orange Grove Blvd. Go south on Orange
Grove to W. California Blvd, turn right. Arroyo Blvd, turn
right. Lower Arroyo Park entrance is on the left. Good view
of the Colorado St. Bridge and casting pond. Lots of parking
and rest rooms. Bring lunch.

MAY 6th, ARROYO SECO PARK, PASADENA (again)

MAY 13th, LAGUNA BEACH

Meet on Cliff Dr. near the Las Brisas Restaurant, or Heisler
Park. There are some places to park in the residential area
but most have parking meters. The McNall's will be going a
couple of days early and will stay at the Laguna Rivera Hotel.
For reservations call (949) 494-1196.

ABOUT THE COVER

Fate has it that the cover this month was submitted by
Shirley Durbin, who just passed away.

She said this about her painting:

"The Plein Air location was Pasadena City Hall. I wanted my
painting to reflect the warm summer light of the day."

She is surely still painting light.

SCHOLARSHIP

We are only 3 months away from our June Raffle. This is the
yearly event that our members make possible through the
donation of their wonderful paintings and the sale of raffle
tickets.

As you know, Scholarship funds are derived mainly from
two MVAL events, "Art in the Park" and the proceeds from
the June raffle. These funds allow us to continue the
tradition of providing art scholarships that help support
the next generation of artists.

We will begin the sale of Raffle tickets at the February
meeting. They are priced at \$1.00 each or six (6) for \$5.00.

Your generosity is always appreciated.

Retha Wells
Jean Tannhauser
Scholarship Co-Chairman

NEW MEMBERS

Lisa Fu
918 Magnis St
Arcadia, Ca 91006
lijuanfu0220@yahoo.com

Lisa has studied water color in China, and also has a P.H.D. in
Science. Additionally she has studied in Japan and Paris. She
is very interested in advancing her abilities in water color.
She is joining MVAL to learn from other artists.

Suzanne Goddard
1805 Rosevelt Ave.
Alta Dena, CA 91001
626 797-5579
suzandjoe@hotmail.com

"Painting is a way for me to express my response to the
beauty and novelty I find in the world. Although creative in
many areas during my life, I began my formal art training 4
years ago with the Mission Renaissance School where I am
still a student working in oil.

By joining Mid Valley, I hope to learn as much art as I
possibly can from demonstrations and inter-action with
other artists."

Jerrie McCluskey
1219 S, Sandy Hill Drive
West Covina, CA 91791
626-919-8170

jlmcccluskey@yahoo.com "I love painting in the
transparent watercolor and enjoy the freshness and surprises
than can be realized when watercolor is allowed to do what
watercolor does. I love painting the nature around me.

I have taken art classes and Mt. Sac, Citrus College and
with Tom Fong, Chris Van Winkle, Gladys Nichols and others.

I have many friends in MVAL and look forward to my
association."

57th MVAL ANNIVERSARY MEMBER'S SHOW

San Gabriel Award Milford Zornes Award President's Award Honor Court Best of Show

Sylvia Megredichian	"So Much Red"	\$100
Kay Fox	"Orchid Glow"	\$100
Linda Fullmer	"Naxi Musician"	\$125
Brenda Swenson	"Rooftops & Spires, Prague"	\$200
Lynne Fearman	"Holly Street Bridge"	Winsor/Newton

Structural Mechanical

1st Place	Patty McMillan	"Wash Day at Keeler"\$100
2nd Place	Minouru Ikeda	"Tank Farm at Ocho Rios".....United Frame
3rd Place	Mary Ann Osko	"Foreign Tapestry".....\$25
HM	Richard Gutschow	"Ranch on Louden Road"
HM	BJ Lane	"The Great Escape"

Genre/Seascape

1st Place	Jan Wright	"The Juggler Did It".....SWAIN'S
2nd Place	Peggy Ebright	"Halleluia".....\$50
3rd Place	Flora Johnson	"Rainy Night".....BLICK
HM	Joyce Patil	"Bali Festival"
HM	Dorothy Davis	"Montana De Oro"

Portrait/Figure

1st Place	Hanna Adler	"Salt & Pepper"\$100
2nd Place	Kay Rouse	"Caleb's Shot".....\$50
3rd Place	Hanna Adler	"A Fellow Artist".....\$25
HM	Jack Jou	"Self Portrait"
HM	Carol Fuller	"Eavesdropping"

Landscape

1st Place	Jane Higley	"Fall Trees".....SWAIN'S
2nd Place	Jan Wright	"Braving Moon House".....\$50
3rd Place	Jean Tannhauser	"Vineyards at Lucca.....BLICK
HM	Lynne Fearman	"Fresh Light"
HM	Nancy Shiershke	"Light of Day"
HM	Jane Levy	"Trees in Snow"
HM	Saralyn Lowenstein	"Big Red Mountain"

Floral/Still Life

1st Place	Michi Ikeda	"Scent of Pink".....SWAIN'S
2nd Place	Nancy Shiershke	"Orchids on Display".....\$50
3rd Place	Carol Fuller	"Trumpet Glory".....\$25
HM	Peggy Moore	"4th Chapter"
HM	Joyce Peterson	"Moonlight Becomes You"

Animal

1st Place	Peggy Moore	"Delicate Beings".....SWAIN'S
2nd Place	Kay Fox	"Brian".....United Frame
3rd Place	Georgia DeBeers	"Madi Gras Cat".....BLICK
HM	Ruth Read	"Gorilla"
HM	Betty Glass	"Trio Del Mar"

Abstract

1st Place	Brenda Welsh	"Super Nova".....Holbein/check
2nd Place	Sam Kitamura	"Crimson Touch".....United Frame
3rd Place	Christel Mackinnon	"Spy Glass".....Blick
HM	Setsuko Okubo	"Rain Fantasy"
HM	Setsuko Okubo	"Compound Arboretum"

“SATURDAY IN THE PARK WITH THE MASTERS”

Save the date. And it is just four weeks away. “Saturday in the Park with the Masters” will be held on May 8th. Again this year, the event will be located on the beautiful Maranatha High School campus, formerly part of the Ambassador College, in Pasadena. This area offers a wide range of subject matter for the Masters to paint. The event is from 10:00 am to 4:00 pm.

The Masters represent some finest painters and instructors in southern California, who will be demonstrating their skills throughout the day with their approaches to sketching and painting. A model will be present for those who will do portrait painting. The opportunity to ask questions and visit is always welcome and is part of the program. During the day visitors will see demonstrations by all using a variety of paint media. As a participant you have the opportunity to witness many demonstrations that offer method and technique with a variety of media all in one day.

As of now, the current list of participating “Masters” will include: Bill Anderson, Lynne Fearmen, Tom Fong, JoAnn Formia, Debra Holladay, Chuck Kovacic, Sam Kitamura, Justine Limpus Parish, Walter McNall, Jim Salchak, Nancy Shiershke, Jason Situ, Joseph Stoddard, and Joseph Todorovitch.

In order to make visitors most comfortable, they should consider the following:

- Bring sketching materials if desired.
- Wear comfortable clothing, a hat and sunscreen.
- Pack a lunch and include water.
- Bring a stool or comfortable chair.
- Camera
- Name tags will be provided at the table on the Saturday both for those who pre-register and for those who walk in.

MVAL sponsors this event in order to raise scholarship funds in the memory of Milford Zornes, who has supported us and “Saturday in the Park with the Masters” through the years.

This workshop event will benefit Mid-Valley Arts Leagues’ support of art education and scholarships within the San Gabriel Valley. If additional information is needed, please call (626) 799-1595 or email rich2000@aol.com. Directions to the site and additional information will be sent to you upon receiving the registration form below. Thank you for your support to “Saturday in the Park with the Masters”.

Registration for “Saturday in the Park with the Masters”
May 8, 2010

Name _____

Address _____

City/Zip _____

Phone _____

\$15 (in advance) _____ \$20 (at the location) _____



Directions:

From the West - Pasadena Fwy (110) Exit Orange Grove. Go north to Green Street, Turn right. go one block turn right on St. John’s Ave, Go about half a block - park in structure on the right.

From the East on Foothill Fwy (210) Exit Orange Grove via Ventura Fwy (134) Go South - proceed same as above to Green Street etc.

From Ventura Fwy (134) Exit Orange Grove and proceed straight onto Colorado Blvd. Turn right at first light onto St John’s Blvd. half a block to parking structure on right.

From the north on Foothill Fwy (210) Take the Colorado Blvd. exit. proceed straight onto St. John’s Ave. parking structure on right.



DALE LAITINEN Workshop

Beyond Ordinary Landscape - May 27-29, 2010

Dale will present a three day intensive workshop covering innovative and traditional approaches to watercolor. Designing strong landscapes using interesting shapes, line and color, will be the hallmark of the workshop. Join us in exploring new ways to approach watercolor.

Memory, Imagination, and Technique: Mastery over technique is not our goal but one aspect of our quest as artists. We use acquired skills in developing our imagination to make it visually tangible. In this workshop we will work toward uniting our visual memory with imagination and employ technique to get there. Not only will we cover transparent watercolor but we will use alternative methods and materials to achieve these goals. Through demos, critiques, and in-studio painting we will press beyond the ordinary conventional landscape and take our subject into a more personal and inventive arena.

Workshop Content

- Daily demonstrations will cover watercolor technique -- both traditional & innovative.
- Lectures and demos will also cover ways to design powerful compositions.
- Instruction includes discussions on drawing for painting and translating sketches and photos into paintings.
- Color layering, charging color, wet into wet washes.
- Edge control, soft edges hard edges and everything in between.
- Combining line with shape.
- Use of alternative surfaces such as Aquaboard by Amper-sand and traditional watercolor papers.
- Use of opaques like gesso.

This three day workshop is geared for intermediate to advanced students.

Dates: Thursday, May 27 through Saturday May 29 from 9:00 – 4:00 p.m.

Location: Community Room, Temple City Civic Center complex 2701 Las Tunas Dr. Temple City
(This is a few blocks west of Baldwin Avenue, between Golden West and Kaufmann Avenues with convenient parking off Kaufmann.)

WORKSHOP IS LIMITED TO 22 PEOPLE.

Registration is based on receipt of check and registration form. The workshop will be filled in order of registrations received. A Materials List will be emailed within four weeks of the workshop.

FEE: MVAL members \$225 Non-members: \$255

A deposit of \$75 must be submitted with registration. Final payment is due by May 10, 2010.

NO REFUNDS WILL BE ISSUED AFTER May 10.

QUESTIONS: Email to Susan Gutschow, workshop chairman at susangatsp@aol.com. Or call (626) 799-1595.

Mail registration form and check to Susan Gutschow, 1618 Laurel Street, South Pasadena, CA 91030.

REGISTRATION FORM - DALE LAITINEN WORKSHOP - May 27 – 29, 2010.

Enclosed is my check for \$_____. If you do not use email, please include a self-addressed stamped envelope (SASE) as well.

Check one: MVAL Member _____ Non Member _____

Please make your check payable to Mid-Valley Arts League and mail to Susan Gutschow, 1618 Laurel Street, South Pasadena, CA 91030-4711.

NAME _____

EMAIL ADDRESS _____

Mailing Address _____

CITY/ STATE/ZIP CODE _____

PHONE _____

Newsletter via E-mail

GO GREEN!

We are working on reducing our monthly expensed for MVAL.

If you have email and would like to receive your Newsletter in your email?

The advantage of an emailed newsletter are:

- 1- Reduction in printing and mailing costs.
- 2- We will be able to have paintings and photographs in COLOR.
- 3- No limit to size of newsletter, so hopefully emailed version will include images that will not appear in the printed version.
- 4- You can archive the newsletters on your hard drive and never misplace a newsletter again!
- 5- You will be doing something good for the environment!

We hope to start sending email newsletters at the beginning of the new year.

If you want to be on the list - email Richard Gutschow RICH2000@aol.

UNITED PICTURE & FRAME CO.

2295 E. Colorado Blvd., Pasadena, CA 91107
626-796-0970 / 877-FRAME21

SPECIAL PICTURE FRAMING PACKAGES FOR WATERCOLORS

HALF SHEET SPECIAL - \$65
FULL SHEET SPECIAL - \$85

*Includes Quality Wood Picture Frame
(several styles), Double Mat & Plexiglass*

MVAL CRIT GROUP

Next meeting for the MVAL CRIT GROUP will be on Wednesday, May 28th at 7:30.

The MVAL CRIT GROUP is open to anyone who wants an opportunity for growth and feedback as an artist. Held on the fourth Wednesday of each month, September – June. Everyone is to bring at least one painting, complete or nearly complete, to share and discuss in a friendly constructive environment. Invite your artist friends.

Time: 7:30pm – 9:00pm

Location: Studio 2310 in Duarte, 2310 Central Ave, Unit 13.

Directions: 210 FWY, Mt. Olive/Duarte exit, right on Huntington Dr, right on Crestfield Dr, right on Central Ave. 626.825.0464.

Contacts: Kay Fox, kay@kayfoxart.com
and Carol Fuller.

THANK YOU

The following organizations and companies made donations for our prizes for the Anniversary Show:



Americas Inc.

**CHEAP JOE'S
ART STUFF**
Make more art. Spend less money.™



WINSOR & NEWTON™
The World's Finest Artists' Materials



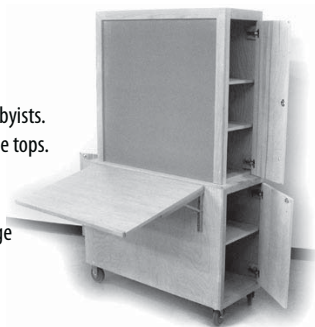
**Jack Richeson
and Company, Inc.**
Fine Art Materials

pachyderm
PORTABLE
WORKSTATION

Portable workstation for fine artists & hobbyists.
Large unit is 6' wide with 2 adjustable table tops.
Small unit is 4'3" wide with 1 adjustable
table top. Large format storage from 1
side, adjustable shelves on other side. Large
cork board display.

Large – \$2,275 (MVAL member, \$1,820)
Small – \$1,950 (MVAL member, \$1,560)

To request order form, call 626.357.8378 or email, markjwood@earthlink.net



March Meeting



Willellyn McFarland Demo



Phyllis Kato wins the demo raffle



Artist of the Month - Pat Hanft

MVAL Anniversary Show





Best in Show Painting
"Holly Street Bridge"
by Lynne Fearman



Brenday Swenson wins First Place in the
Honor Circle



SATURDAY IN THE PARK WITH THE MASTERS - 2009



Debra Holladay



Chris Van Winkle



Walter McNall



Joseph Stoddard



Joseph Todorovich



Sam Kitamura



Chuck Kovacic