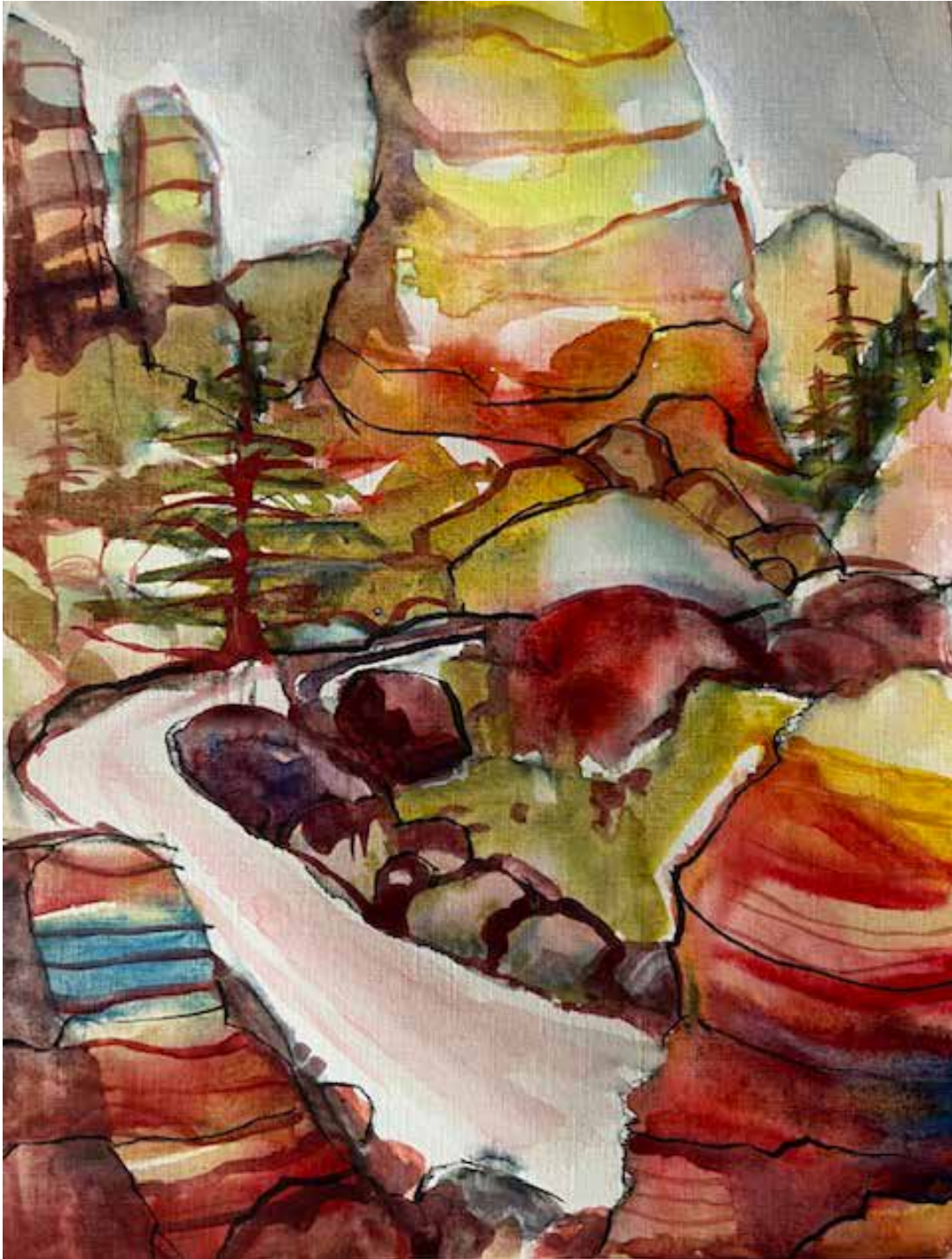


MVAL

Art & the Artist

October 2024

Newsletter for the Mid-Valley Arts League



Felicia Hazelton

Demonstration by Justine Limpus Parish

MID-VALLEY ARTS LEAGUE 2024 - 2025 BOARD OFFICERS

President ----- Dilmit Singh
First Vice President (Programs)
----- Elana Goldheimer
Second Vice President
(Membership) ----- Mary Archibald
Third Vice President
(Exhibits) ----- open
Treasurer -----
Recording Secretary
----- Monica Homer
Corresponding Secretary
----- Pam McGuern
Parliamentarian -----

Membership in MVAL:
Membership is open to artists and art lovers
of all levels.
If you are interested in membership
contact:
Mary Archibald
archibald.m@gmail.com

WEBSITE:
Midvalleyartsleague.org
or MVAL.org
Website Editor: Jennifer Zapp

Art & the Artist Editor:
Joyce Nunamaker

All articles and announcements
to be included in the
Art & the Artist may be sent to:
253 Windsong Court
Azusa, CA 91702
626-334-1646
E-mail: janunamaker@verizon.net

Deadline is the first Wednesday of the
month. If you have an event that takes
place in the first half of the month - be
sure to get it in the month before.

PRESIDENT'S MESSAGE

Dear Members,

Art making has been around longer than any art establishment but the establishment harnesses the strength in numbers. Art making can often times be a lonely and thankless affair but not so at Mid Valley! Last month our demonstrator ensured there were materials for our community of artists to engage in hands-on learning. Bookmaking – the art form that is near extinct in this tech savvy world – had us all peering at our neighbors work to examine the next stitch. Hand crafting books, as Chris Frausto stated, is engaging and fulfilling as it personalizes the materials and the printed matter. Thank you, Chris, for giving us a glimpse into the possibilities of the craft.

Diametrically opposed, this month we have Justine Parish who will use the iPad to show us digitally created pieces of artwork. Her advanced talents and skill of how she transitioned her artistic skills of traditional fashion design and illustration to digital fashion design and illustration is very impressive. Justine is a full-time faculty member at Art Center College of Design and the founder of The Sewing Lab.

Come one, come all – your fun times with food and friends awaits your in-person presence!

That said, thank you, John, for continuing to support our tech needs; as I understand, many are unable to attend in person and value the ability to see the demonstrations from their homes. And thank you members of the board – no task is too small for you. Each contribution is valued and appreciated and propels us to keep moving forward.

The suggested theme for October art of the month is anything related to fall/autumn. Bring your work and win the big ticket. Anyone “inking” in October?

I look forward to hearing the inspiration and seeing more of you at the meeting on October 16th!

Dilmit Singh
MVAL President

MEETING DATES

OCTOBER GENERAL MEETING

IN PERSON and ZOOM MEETING

October 16th, 2024 - 7:30 PM
Church of the Good Shepherd
400 W. Duarte Rd., Arcadia, CA 91007-6819

NOVEMBER BOARD MEETING

November 6th, 2024 - 7:00 PM
Virtual Meeting via Zoom.



OCTOBER DEMONSTRATION

JUSTINE LIMPUS PARISH

COSTUME FIGURE PAINTING ON PROCREATE

Working from a fashion photo image on her Pinterest page, Justine will use Procreate on her IPAD to demonstrate how to illustrate a full color fashion or costume figure. She will demonstrate drawing the figure, changing the garment shapes, drawing the garment details, rendering the colors and textile patterns and prints. She will also give an introduction to Procreate and explain her process as she goes.

Audience members and attendees on Zoom can follow along and draw with her. The link to the Pinterest page Justine will use is <https://www.pinterest.com/justinelparish/fashion-outfits/>

Justine Limpus Parish has worked extensively in the LA and SF fashion industries as a fashion illustrator, designer, educator, art director and published author. Justine is a Full time Professor at Art Center College of Design in Pasadena and is the Director of the Sewing Lab. She teaches in the Product Design and Entertainment Design Departments: Sewing Lab, Intro. To Wearable Product Design and Costume Design. She has taught costume figure sketching workshops for Entertainment industry studios such as Netflix Animation, Disney Consumer Products, DreamWorks Animation, and Paramount Animation .

Justine created the Fashion Department at the Academy of Art University, was Advertising Art Director for Liberty House of California, and holds a BFA in Painting & Drawing. Justine has been a designer of her own signature collection of special occasion fashion. She is the author/illustrator of her own E-Book series "Drawing Fashion" available on lulu.com , and writes illustrated articles for magazines such as Belle Armoire Magazine. Parish's designs and illustrations appear in the following publications: "Artwear: Fashion & Anti-Fashion", "Fabric Artistry" by Singer, "Color with Style" by Donna Fujii, and she was Curator of "Opulent Splendor" artwear exhibition at Brand Library Art Gallery 2005. She is a member of The Costume Society of America, and past President of the Wearable Art Connection of Southern California.

Blog: www.justinelimpusparish.wordpress.com

IN PERSON MEETING

Church of the Good Shepherd
400 W. Duarte Rd., Arcadia, CA 91007-6819



ZOOM MEETING

For those preferring to stay home.

You will receive an email before the meeting telling you how to log on ZOOM to attend. The meeting will be open for log-in starting around 7pm.

ART OF THE MONTH

Art of the Month is going back to being in person, at the meeting only.
Work may be framed or matted so that it can be displayed on an easel.
If you have an easel, floor or table style, PLEASE bring it.

If you want to follow a theme, something related to Fall/Autumn, but all subjects are welcome.

Nikki Thomas
Art of the Month Chair

ON THE COVER

Cover Art by **Felicia Hazelton**.

ART AND THE ARTIST COVERS

I need cover art! **PLEASE!!!!**

Art does not need to be full paintings, sketches, plein aire studies and workshop work is welcome.

You can get a pretty good shot of your work just using your phone. Make them as square as you can, but don't stress, I can cleaning crop your photo.

Send your images to janunamaker@verizon.net and help me collect a folder full of images to use!

Thank you,

Joyce Nunamaker
Editor, *Art and the Artist*

THURSDAYS IN PLEIN AIR

To confirm or ask questions Call Lynne Fearman (626) 355-7562 cell: (626) 487-6566
Bring lunch or take a chance there will be a place to buy.

If you are on Facebook, join the "Thursdays in Plein Air" Facebook Page.

The Facebook page will keep you updated on any changes and connected with the other painters!

Meet at the designated location at 9:00am and paint till 12:00.

At noon we gather for lunch and sharing of sketches and paintings. After lunch is the critique/share.

The critiques are informative and instructional. In the event of rain the paint-out will be canceled.

We have done our best to give accurate directions. Since we are based in San Gabriel, our directions stem from there.

It is each person's responsibility to carry a map, GPS, or double check direction.

Bring a folding chair, hat, bug spray, and umbrella if you have one.

We will cancel in case of rain or very high heat.

OCT 10th - FRANK BONELLI PARK, SAN DIMAS

Take the 210 Freeway to the 57 Freeway south. Take the Ragging Waters Dr. Exit. Meet at the boat launch. Bring lunch.

OCT 17th - THE HOME OF MOLLY MUNGER

450 So San Rafael Ave. Pasadena.

OCT 24th - CHURCHES AND OLD GAS STATION, MONROVIA

On Shamrock at Walnut Ave. just north of Huntington.

OCT 31st - HOME OF MICHELLE LOFTHOUSE FOR HALLOWEEN ON STEROIDS!

1145 Orange Ave. Bring lunch.

No parking on the south side on Thursdays.

NOV 7th - THE GAMBLE HOUSE, PASADENA

4 Westmoreland Place. Bring lunch or eat out nearby.

NOV 14th - EXPOSITION PARK ROSE GARDEN, LOS ANGELES.

Bring lunch

NOV 21st - FERN DELL PARK, LOS ANGELES.

Just past the road that leads up to the observatory, take Fern Dell Dr. up to "The Trails" Café. Where we will be having lunch.

NOV 28th - HAPPY THANKSGIVING!

DEC 5th - CHINA TOWN, LOS ANGELES

DEC 12th - EAST FORK OF THE SAN GABRIEL RIVER, AZUSA.

Take the 210 to Azusa Ave. after leaving the city proper keep going up the canyon (approx.. 6.7 miles) look for the bridge on your right. Bathrooms and picnic tables. Great overlook of the river.

DEC 19th - CLAREMONT TRAIN STATION.