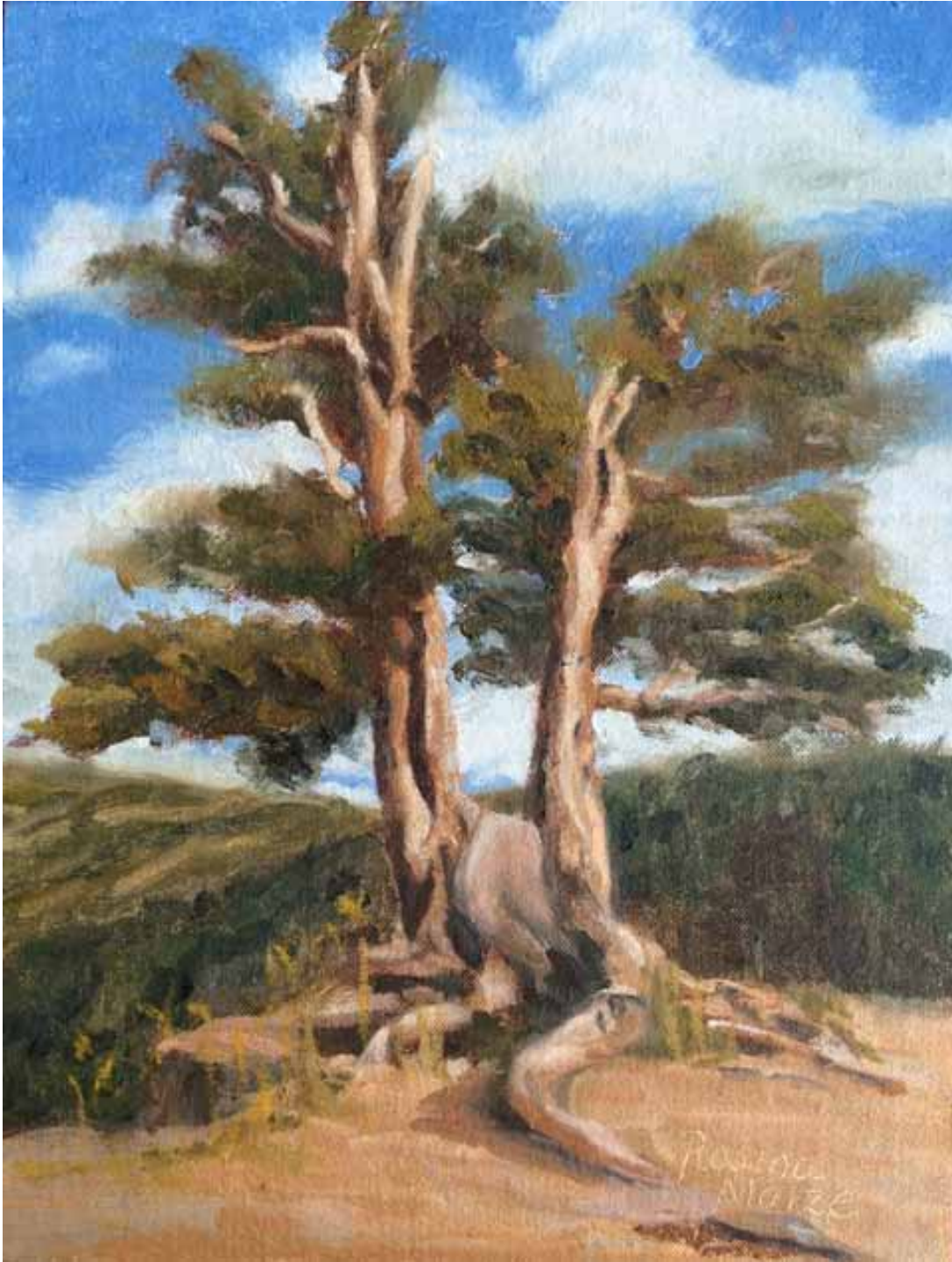


MVAL

Art & the Artist

October 2016

Newsletter for the Mid-Valley Arts League



Demonstration by Joseph Stoddard

MID-VALLEY ARTS LEAGUE 2013 - 2014 BOARD OFFICERS

President ----- Pete Morris
First Vice President (Programs)
----- Rosina Maize
Second Vice President
(Membership) ----- Armando Ruiz
Third Vice President
(Exhibits) ----- Flora Johnson
Treasurer ----- Lee Johnson
Recording Secretary ----- Judi Gale
Corresponding Secretary
----- Kathleen Stephens
Parliamentarian ----- Armando Ruiz

Membership in MVAL:

Membership is open to artists and art lovers
of all levels.

If you are interested in membership
contact: Armando Ruiz - 626-331-8270
armandoarui@verizon.net

WEBSITE:

midvalleyartsleague.org

mval.org

Website Editor: Roy Genger

Art & the Artist Editor:
Joyce Nunamaker

All articles and announcements
to be included in the

Art & the Artist may be sent to:

253 Windsong Court

Azusa, CA 91702

626-334-1646

E-mail: janunamaker@verizon.net

Deadline is the first Wednesday of the
month. If you have an event that takes
place in the first half of the month - be
sure to get it in the month before.

PRESIDENT'S MESSAGE



Greetings fellow artists,

The year has begun at MVAL with lots of energy and artistic activity. At the general meeting we were very entertained and helpfully informed by our demonstrator Chuck McPherson, who also conducted an enjoyable and instructive watercolor workshop on the 3 days that followed. Ike Ikeda is doing a great job facilitating the workshop events.

At the general meeting we welcomed four new members, all of them outstanding students of Julie Crouch. As usual, the Co-op group is a vital hub of artistic activity, and the paint out group and monthly crit group have resumed their fruitful activities. It is very satisfying to realize that artists are being encouraged and the group seems to be growing in a healthy way.

October's monthly meeting will be on the 19th at the Good Shepherd Methodist Church, 7:30 pm.

Our demonstrator will be long time friend of MVAL Joseph Stoddard, an excellent watercolorist and teacher. He has been very influential in my own growth as a watercolor painter. This is a real treat.

Don't forget to bring a painting for the monthly contest at the meeting.
See you there!

Pete Morris

President

MEETING DATES

OCTOBER GENERAL MEETING

The October General Meeting will be October 19th - 7:30 PM
Church of the Good Shepherd
400 W. Duarte Rd., Arcadia, CA 91007-6819

NOVEMBER BOARD MEETING

The November Board Meeting will be held November 2nd - 7:30 PM
Live Oak Park, Temple City

OCTOBER PROGRAM

Joseph Stoddard

Joseph Stoddard is a partner at SKA Design (an environmental graphics design office) located in South Pasadena. He paints in the evenings and on weekends and lives in Pasadena.

He has produced paintings for a number of Pasadena events, including the Bungalow Heaven Annual Tour, the Colorado Street Bridge Party, the Pasadena Showcase House of Design, the California Art Club Artists for Architecture Painting Project, the Pasadena Symphony and the Pasadena Pops Orchestra. His work was recently featured in the latest issue of *The Art of Watercolor*, a French art magazine as well as *Studios* magazine, and *Watercolor Artist* magazine. His studio was featured in *The Man Cave Book*.

His work has also been on the covers of a variety of publications including *Westways Magazine*, *Pasadena Magazine*, a book series published by the Historical Society of Southern California, and the *Lost and Found Series* by Many Moons Press. In 2001 a book of his sketches entitled *Pasadena Sketchbook* was published. The second edition was published in October of 2008. A collection of sketches of the University of Redlands entitled *Redlands Sketchbook* was published in 2007. Walter Foster Publishing published *Expressive Color*, a painting instruction book, in August of 2008.

In 2012, Azusa Pacific University purchased a series of 10 original sketchbooks for their permanent collection, and a print of his painting of Maranatha High School was given to Laura Bush by the school. In 2013, he was invited to submit art for the Bright Side

of the City art event Jyvaskyla, Finland. His painting of the Pasadena Train Station is in the permanent collection of the Pasadena Museum of History. He developed the theme paintings for the Pasadena Showcase House of Design for both 2012 and 2014.



Rosina Maize
Program Chairman



ART OF THE MONTH

These topics are open for your own interpretation:

October....."Dia de los Muertos"
November...."Appreciating All We Have"
December...."All about the Children"
January....."New Creative Adventures"
February....."Queen of Hearts"
March....."En Plein Air"
April....."Dancing for Rain"
May....."Flowers for All"

Bring your paintings a bit early so that everyone has an opportunity to enjoy them.

JoAnn Formia
Art of the Month Chairman

MVAL CRIT GROUP

The MVAL CRIT GROUP is open to anyone who wants an opportunity for growth and feedback as an artist. Everyone is to bring at least one painting, complete or nearly complete, to share and discuss in a friendly constructive environment. Invite your artist friends.

Crit Night is on the SECOND WEDNESDAY of the month

Time: 7:30 PM – 9:00 PM

Location: Studio 2310 in Duarte, 2310 Central Ave, Unit 13.

Directions: 210 FWY, Mt. Olive/Duarte exit, right on Huntington Dr., right on Crestfield Dr. right on Central Ave.
Contact: Mark Wood - 626.825.0464.

Studio 2310 Open Studio, Mondays & Wednesdays

Mark Wood, cofounder of Studio 2310, invites you to join him Mondays or Wednesdays from 10am to 2pm to paint in your medium of choice.

Creativity is contagious. Learn, share and be inspired by other artists creating art in different mediums and styles. Participate in friendly constructive critiques. Painting in a series will be encouraged.

Studio 2310 is now accepting registration from 10 committed artists on a first come first served basis. Submit your registration NOW!

Artists commit to weekly sessions on a month to month basis.

\$40 for a four Monday or Wednesday month,

\$50 for a five Monday or Wednesday month.

Studio 2310 is located at 2310 Central Ave., Unit 13, in Duarte.

Email Mark for more information: markjwood@earthlink.net
Or call: 626.825.0464

ARTIST NEWS

Paintings by the following MVAL members were juried into the *48th Watercolor West International Juried Exhibition* October 15, 2016 through December 18, 2016, by Juror Robbie Laird: **Hanna Adler, Francesca Brayton, Julie Crouch, Tom Fong, Devorah Friedman, Fealing Lin, Mary Ann Osko, Albert Setton.**

Lynne Fearman's painting, "*Park Trail Hikers*", won 3rd place at the *California Plein Air Painters, International Plein Air Challenge Juried Exhibition.*

The exhibition runs through November 15th, 2016, on Cannery Row Suite 206, American Tin Cannery Building, 125 Ocean View Blvd., Pacific Grove, CA.



Vicki Thomas will be showing her acrylics, watercolors and drawings in her brand new art studio located on her property.

"It will be the first time in nine years that I'll be in my own studio, and I'm very happy about this.

Please come by and see my studio and new art work."

- Vicki

2851 Harvest Drive, Mariposa, CA 95338

vickithomas@sti.net

www.vickithomasartist.com

Sierra Art Trails 2016

Open Studio Tour

Friday, Saturday, and Sunday, Sept. 30—Oct 2.

From 10am to 6pm.

For a map of all participating locations, purchase a catalog for \$20.00 from selected retail location.



ART IN THE PARK WITH THE MASTERS 2017



Saturday in the Park with the Masters Brain Storming Session Wednesday, October 26, 7:30pm

Join us for a brainstorming session to:

- Choose a new SIPM director
- Consider new or revised format
- Select Master Artists to invite for 2017
- Consider New Location / Venue
- Promotion of the event

Meet at Studio 2310, 2310 Central Avenue, Unit 13, Duarte.

If you are not able to attend the session, please feel free to submit your suggestions to:
markjwood@earthlink.net.

MVAL GALLERY

The MVAL Gallery at Live Oak Park Community Center, 10144 Bogue Street, Temple City will have openings for exhibitions of members' paintings beginning in March 2017. Artists exhibit for two months, 5-6 or 12 paintings, For Sale or NFS. A sign-up list will be circulated at the MVAL meeting, November 16th.

COLORFUL ELEPHANT

Did you clean out your supplies and bookshelves this summer? Bring any supplies, books or other art related materials that you no longer need and sell them on our White Elephant table. Mark items with price and provide a container for money,

NEW HONOR COURT INDUCTEES

Congratulations to the new Honor Court members, **Devorah Friedman** and **Hanna Adler**.

WATERCOLOR WEST

Watercolor West International Juried Exhibition

Oct 15 - December 18, 2016

Opening Reception, October 15 from 5-7 pm

Open Wednesday through Sunday: 12-5 pm

Brea Civic & Cultural Center

1 Civic Center Circle

Brea, CA 92821

visit - WatercolorWest.org

for more information and

Demonstration/Workshop Schedule

MVAL MEMBERS

Membership in MVAL is presently 178 members.

Just in case you were curious!

We will discover the nature of our particular genius when we stop trying to conform to our own or to other people's models, learn to be ourselves, and allow our natural channel to open.

Shakti Gawain

ABOUT THE COVER

The cover art this month was painted by **Rosina Maize**.

COVER ART FOR 2016-17

I am in DESPERATE NEED of cover art! I can do pretty well with a regular camera shot of your work. Try to shoot it without glass to avoid glare and as straight on as possible. Don't worry about it being just a bit off "square", I can do some cropping and retouching to fix that up.

The cover doesn't have to be a large finished painting. Something that came out well in your sketchbook or a small plein air painting is welcome!

PLEASE try to include a short statement about the painting... at least the location and medium!

Joyce Nunamaker
Editor - Art & the Artist

A Second Opportunity

Chris Van Winkle Workshop

Presented by JoAnn Formia, Pete Morris,
Jan Wright and Jeanette Wolff

Morro Bay

October 30 – November 3, 2016



JoAnn, Pete, Jan and Jeanette will present a four day workshop at Morro Bay, CA on Oct. 30 through Nov.3, 2016. Painting will be in plein air, starting 9am – 4pm. Each presenter will demonstrate one day and give a critique late afternoon. Cost of the workshop is \$150. and enrollment is limited to 25.

There will be a different painting site each day, and this year, the first year without Chris, we will visit some of his favorite sites. We hope to make this a yearly event and invite you to paint with us as we remember Chris.

On Sunday afternoon, Oct. 30, 4 – 6 pm, we will gather at Chris' house to pick up a map for the week, meet new and old friends, and have a little wine and cheese. The address is 436 Fresno Ave., Morro Bay, CA 93442. Take the Morro Bay Blvd. exit from Hiway 1, come through the roundabout, at the Valero Gas station make a left on Kern, come up the hill to the stop street, make a right on Ridgeway, and another immediate right on to Fresno. The house is on the right, two stories, yellow. If you are not arriving until Monday morning, come by the house and Caroline will give you a map.

On Wednesday evening, there will be a barbecue dinner at the house. All are welcome including spouses and significant others.

THURSDAYS IN PLEIN AIR

To confirm or ask questions call Call Lynne Fearman (626) 355-7562 cell: (626) 487-6566
Bring lunch or take a chance there will be a place to buy.

Meet at the designated location at 9:00am and paint till 12:00.

At noon we gather for lunch and sharing of sketches and paintings. After lunch is the critique/share.

The critiques are informative and instructional. In the event of rain the paint-out will be canceled.

We have done our best to give accurate directions. Since we are based in San Gabriel, our directions stem from there.

It is each person's responsibility to carry a map, GPS, or double check directions.

If you are on Facebook, joint the "Thursdays in Plein Air" Facebook Page. The Facebook page will keep you updated on any changes and you can also connect with the other painters!

OCT 13th -PASADENA CITY HALL

100 North Garfield Take the 210 Freeway to Marengo Ave. off ramp. Go south to Ramona St. make a left and park in structure for \$7.00 or metered parking. Meet inside for lunch. Bring lunch.

OCT 20th - NEWCOMB'S RANCH

Angeles Forest Take the Angeles Crest off-ramp from the 210 west Freeway also known as the 2 fwy. Head north on Angeles Crest for approximately 26 miles. Just after the Chilao Campground sign you will see the sign for a restaurant on the right. Slow down and pull left into the parking lot. We will eat there for lunch and have our critique inside.

OCT 27th - ALEGRIA STREET NORTH OF GRANDVIEW AVE. in SIERRA MADRE

Between Baldwin Ave. and Mountain Trail. Halloween is a big deal for this street. TAKE THE 210 Fwy to Baldwin Ave. in Arcadia head north towards the mountains on Baldwin. Just past Grand View is Alegria. Make a right and head for the middle of the block. Lots of pumpkins and scary stuff!

NOV 3th - LA CASITA DEL ARROYO, PASADENA

177 S. Arroyo Blvd. Exit 134 fwy at Orange Grove turn south. Turn right on Arbor St, turn right on S. Arroyo Blvd. DO NOT PARK IN THE PARKING LOT. Restrooms are available in Lower Arroyo Park near the Casting Pond. Bring lunch.

NOV 10th EXPOSITION PARK , LOS ANGELES

Take the Pasadena Fwy. to the Harbor Fwy. south. Exit onto West Exposition Blvd. Make a U-turn at Watt Way. 900 Exposition Blvd, Los Angeles 90007. Meet in the Rose Garden under the African fig trees. Parking available in surrounding lots. \$10. Bring lunch.



Susan Zenger

NOV 17th - MONROVIA LIBRARY

321 S Myrtle Ave, Monrovia, CA 91016. Take the 210 fwy to the Myrtle Ave. off ramp in Monrovia. Head north to Palm Ave. park on north side of the library. Bring lunch.

NOV 24th - RANCHO CUCAMONGA CENTRAL PARK

11200 Baseline Rd. Take 210 freeway east to exit 60, onto Milliken Ave. Turn right onto Milliken Ave. Turn right onto Central Park. Spectacular views of Mount Baldy, with wide open spaces. Bring lunch.

DEC 1st - OLVERA STREET, LOS ANGELES

Leave at 9:00 am on the Gold Line from the Sierra Madre Villa Station in Pasadena (Located at Halstead St. and Foothill). We'll take the Gold Line to Union Station. It is a short walk across the street to Olvera St. Eat there or bring a lunch.

DEC 8th - TRAVEL TOWN GRIFFITH PARK.

Los Angeles

5200 Zoo Dr. Take the 134 freeway west to the Forest Lawn Drive exit. Turn left on Zoo Drive. At the end of the road, turn right onto Griffith Park Dr. Destination is on your left.

DEC 15th - PECK ROAD PARK, ARCADIA

5401 Peck Rd. Arcadia. Take 210 freeway east to Myrtle Ave. in Monrovia. Turn south, heading away from the mountains. In 2.6 miles look for entrance to the park on your right. Just past McBean Dr. on your left.

DEC 22nd - CHRISTMAS PARTY

To be announced.



Rosina Maize



Lynne Fearman

SEPTEMBER MEETING



Demonstration -
Chuck McPherson



Artist of the Month -
Ike Ikeda