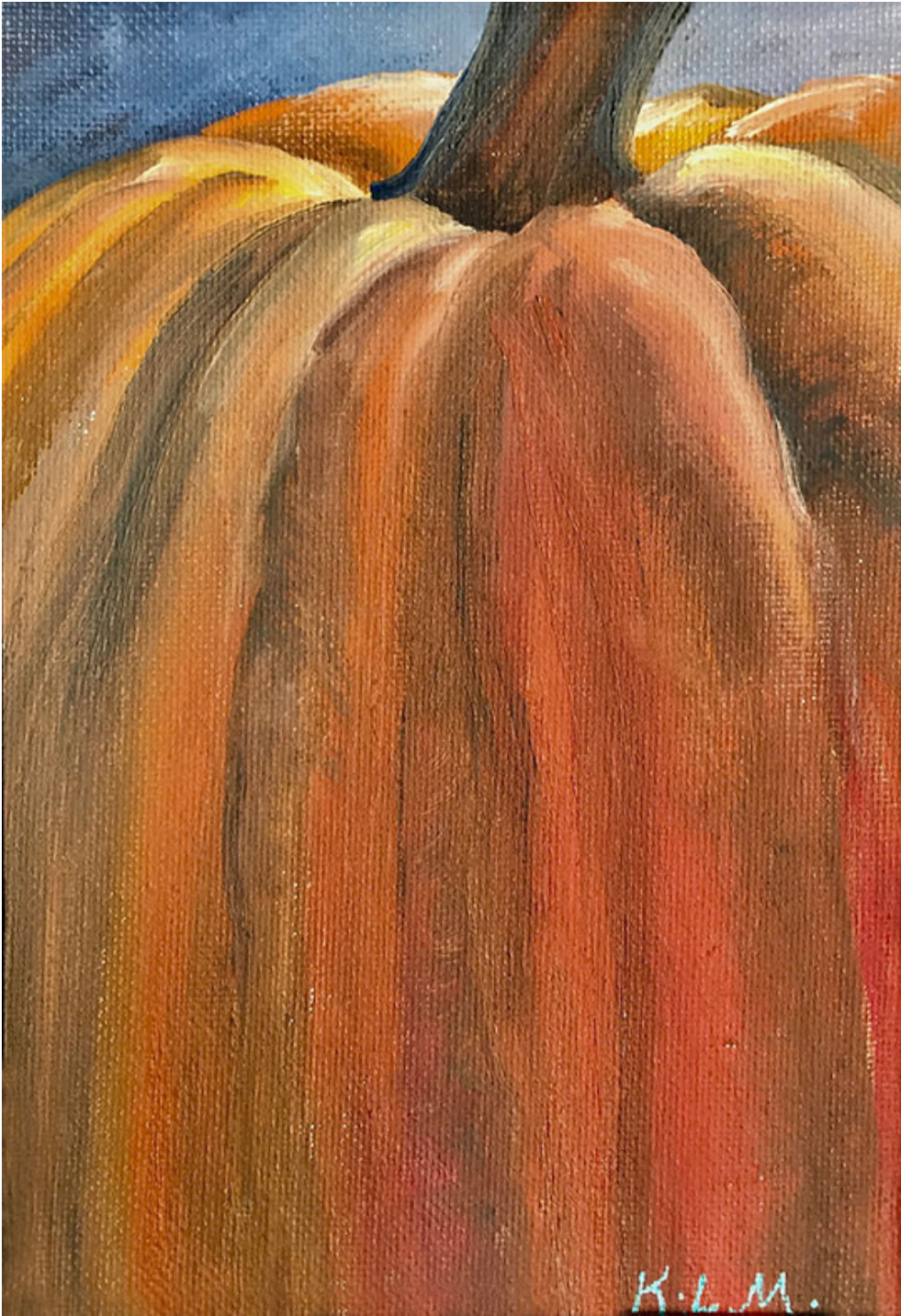


MVAL

# Art & the Artist

November 2017

Newsletter for the Mid-Valley Arts League



**Demonstration by Lynne Fearman**

## MID-VALLEY ARTS LEAGUE 2013 - 2014 BOARD OFFICERS

President ----- Pete Morris  
 First Vice President (Programs)  
                               ----- Rosina Maize  
 Second Vice President  
   (Membership) ----- Armando Ruiz  
 Third Vice President  
   (Exhibits) ----- Fran Ortiz  
 Treasurer ----- Lee Johnson  
 Recording Secretary ----- Judi Gale  
 Corresponding Secretary  
                               ----- Hedy Fintescu  
 Parliamentarian ----- Armando  
 Ruiz

Membership in MVAL:  
 Membership is open to artists and art lovers  
 of all levels.  
 If you are interested in membership  
 contact: Armando Ruiz - 626-331-8270  
                               armandoarui@verizon.net

### WEBSITE:

midvalleyartsleague.org

mval.org

Website Editor: Roy Genger

Art & the Artist Editor:  
 Joyce Nunamaker

All articles and announcements  
 to be included in the  
 Art & the Artist may be sent to:  
 253 Windsong Court  
 Azusa, CA 91702  
 626-334-1646  
 E-mail: janunamaker@verizon.net

Deadline is the first Wednesday of the  
 month. If you have an event that takes  
 place in the first half of the month - be  
 sure to get it in the month before.

## PRESIDENT'S MESSAGE



Greetings fellow artists,

Last month brought some wonderful opportunities for our Mid Valley artists. The demo and subsequent workshop by renowned watercolor artist Soon Warren were challenging, inspiring and unique.

The prestigious watercolor exhibit at Watercolor West in Brea began in October and will continue until December 17. Also, The International Open Exhibition of the National Watercolor Society in San Pedro has begun and will continue through December 17.

For the 2nd year in a row, JoAnn Formia put together a multi-day workshop in memory of Chris Van Winkle, in Morro Bay, which was enthusiastically attended by some of our members as well as other artists.

Our General Meeting on November 22nd will feature Lynn Fearman, the accomplished painter who leads our Thursday paint-out group. She has a distinctive style and is particularly well known for her oil paintings. This is one you don't want to miss. Our meetings are held at Good Shepherd Methodist Church in Arcadia.

Please remember to bring a piece of artwork for The Artist of the Month contest at the General Meeting.

Best regards and see you at the meeting,

Pete Morris

President

## MEETING DATES

### NOVEMBER GENERAL MEETING

The November General Meeting will be November 15th - 7:30 PM  
 Church of the Good Shepherd  
 400 W. Duarte Rd., Arcadia, CA 91007-6819

### DECEMBER BOARD MEETING

The December Board Meeting will be held December 6th - 7:30 PM  
 Live Oak Park, Temple City



## NOVEMBER PROGRAM

### Lynne Fearman

Lynne Fearman has been a professional artist for over 40 years. She was a freelance illustrator and graphic artist early in her career. In the last 15 years she has been part of Mid-Valley's Thursday en Plein Air group. In the last 3 years she has taken over as the location master for the group. Painting primarily in oils in recent years, she has found a versatile medium that she finds fun to manipulate and experiment with.

Lynne will be doing a demo on various ways to start a painting in the field that will lead to a successful finished painting in a limited period of time.

Lynne will be donating 3 finished miniatures for the raffle.



## ART OF THE MONTH

There will be no Art of the Month at the June meeting. Paint all summer and plan to participate in our next year, beginning in September!

Art of the Month: 2017-2018

These topics are open for your own interpretation:

November...."Generosity"

December...."It is Snowing Somewhere"

January....."Start a New"

February....."Open Your Heart"

March....."Making Greens"

April....."Looking for Rain"

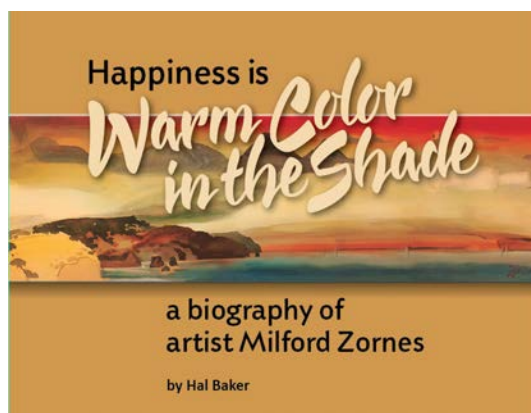
May....."Bouquets"

JoAnn Formia

*Art of the Month Chairman*

## ZORNES BOOK

**Coming this fall – "Happiness is Warm Color in the Shade, a biography of Milford Zornes"**



The book will take you from the Panhandle of Oklahoma to Idaho and then Southern California where this future National Academician became involved with the California Scene Painters. Go with him to China, Burma and India during WWII. Follow him to Greenland and eventually to Maynard Dixon's home and studio in Utah. Travel with Milford as he talks about being a world traveler who expresses his experience in his paintings. Milford left an extensive legacy of paintings, mentorships and workshops. Learn from other artists how Milford's influenced their lives. Find out about the role Pat Zornes played in Milford's life. Learn how Milford adjusted to painting and teaching with limited vision. Follow 100 years of an artist's journey through life, 1908 – 2008.

## COLORFUL ELEPHANT

MVAL had continued to provide a space where you can pass on your gently used art supplies and art books that you no longer want. This has been a popular feature at our meetings for the past 10 years or so.

You may bring your fabulous "someone else's treasure" to sale at our general meeting. Mark your items with a price and provide a container for money.

## ABOUT THE COVER

Our lovely seasonal cover art was painted by **Karon McCarthy.**

## MVAL ANNIVERSARY SHOW

Our annual members show will be March 29 - June 2. Put this on your calendar! More info will be published in months to come.

## NEWSLETTER COVER ART

Have you ever wondered how artwork is chosen for the cover of Art and the Artist?

They are sent to me. It's that simple. You send me an image, I'll put it on a cover!

What seems to happen is that I will have a few artist send me multiple pictures. That's great, if you have a few don't hesitate to send them! BUT, I would LOVE to have a larger variety to choose from and feature art from more members.

Take a picture of a painting with your digital camera or phone. Try to get it as "square on" as you can, but don't worry, I can put it into photoshop and clean up the edges just a bit, it's like putting it in a mat! Your studio work, plein air painting and even a nice sketchbook piece are all welcome. Please write a bit about it. I'd really like to say more about it than "This watercolor of a tree was painted by \_\_\_\_\_." Why did you choose the subject and where was it? Were you trying to accomplish something in particular?

I really NEED cover art! Email your entries (one or more) to: [janunamaker@verizon.net](mailto:janunamaker@verizon.net)

Joyce Nunamaker  
*Editor - Art and the Artist*



## NEW MEMBERS

Correction:

I got the photos swapped for these 2 new members last month. These are now properly identified. Sorry about the mistake!

Joyce Nunamaker  
*Editor: Art & the Artist*



**Andrea L. Garrett**



**Susan Martinez**



**Pati Hammond**  
**Upland, CA**

Pati studied interior design architecture in college. She has studied with Alex Powers, Martha Underwood, Gerald Brommer, Judi Betts, Fran Larson and many others. She belongs to AAIE, Chaffey College Museum and Ontario Museum. Pati has been painting with Sylvia Meggerdician at Art Box Studio for 18 years. In the beginning she painted photo realism. Now she does mixed media with a "surprise". She loves art the involves fiber, knitting and needlework, sewing, traveling and silk painting. "Art is a journey, always learning and creating, solving problems. Wishing to know ALL."

**Kathleen Stephens**  
**Walnut, CA**

Kathleen is a returning MVAL Member and we welcome her back! She has a Masters Degree in Social Work but she has been doing arts and crafts since childhood.

She is presently working in both oil and watercolor, landscapes and portraits in an impressionistic style. She is continuing to learn and search for a personal style. Kathleen also enjoys reading, gardening, sewing and all crafts, political action, camping and kayaking. She says that being in MVAL will give her inspiration.

**Tomiiko Higuchi**  
**Temple City, CA**

Tomiko has a BA in Fine Art from Cal State L.A. She had been taking Pradeepa Thirumulu's class at Arcadia Parks and Recreation for about 3 years. She has also taken 3 sessions with Julie Crouch through San Gabriel Parks and Recreation. Tomiko mostly paints in watercolor and likes scenery, flowers and people. She also enjoys travel, photography and bowling.

Tomiko feels that MVAL will inspire her to continue with watercolor and give her the opportunity to meet other who have the same interest.

**Maria E. Peeters**  
**Norwalk, CA**

Maria has done oils, oriental brush painting, some acrylics and now she is concentration on porcelain painting. She loves all kinds of art in general but wants to learn more about watercolors. Maria also enjoys cooking and gardening. She thinks that knowing other painters will help her improve her work by learning from them.

## GALLERY

Many Mid-Valley member may not know about our Temple City "Gallery" space. The paintings are hung in the hallway, near the reception desk, at Live Oak Park. This park is a busy community center with constant activities in the main building, tennis courts, picnic areas, a playground and youth soccer games. There are a lot of people who are using this facility.

We have our board meeting in one of the rooms the first Wednesday of every month. They don't charge us for this room, in exchange we have made a commitment to display our artwork there.

You can have show your work, possibly sell a piece AND help out this organization all at once!

The gallery space holds about a dozen paintings, and we are happy to have a "one artist show" if you would like. We also understand that you may not have 12 framed paintings, but if you have 6, or 3, or 2 or even ONE that you would like to display, let us know!

The gallery chairman is Linda Toussaint.

You can send her an email at [s.toussaint@verizon.net](mailto:s.toussaint@verizon.net) or call her at 626-358-7178. Let her know what you would like to display so that she has something to work with! If there are enough contributors she could put together a showing of 2 paintings each by 6 artists, or a 2 artist show, or whatever! You get the idea.

Please help us fill this lovely gallery space and also help provide a meeting room for the board!

## THURSDAYS IN PLEIN AIR

---

To confirm or ask questions call Call Lynne Fearman -  
(626) 355-7562 cell: (626) 487-6566  
Bring lunch or take a chance there will be a place to buy.

Meet at the designated location at 9:00am and paint till  
12:00. At noon we gather for lunch and sharing of sketches  
and paintings. After lunch is the critique/share.  
The critiques are informative and instructional.  
In the event of rain the paint-out will be canceled.  
We have done our best to give accurate directions.  
Since we are based in San Gabriel, our directions stem  
from there.  
It is each person's responsibility to carry a map, GPS, or  
double check directions.

If you are on Facebook, join the  
"Thursdays in Plein Air" Facebook Page.  
The Facebook page will keep you updated on any changes  
and connected with the other painters!

### NOV 9th - MOUNT WILSON OBSERVATORY

Opens at 10am! From Pasadena take the 210 Freeway  
north to Angeles Crest Highway off ramp, go right up  
Hwy 2 north 21 miles to Mt Wilson turnoff. Meet at the  
to at 10am. Bring lunch.

### NOV 16th - OLVERA ST. LOS ANGELES

Take the Metro to Union Station. Location is across the  
street . By car you can take the Pasadena Freeway to  
the Hill St. off ramp. Continue on Hill Street to Ord St.  
Make a left and continue to Alameda. Make a right onto  
Alameda. Location is on the right. Pay Parking available  
at Union Station across the street.

### NOV 23rd - ARLINGTON GARDEN PASADENA

275 Arlington Dr. Pasadena 91105 Take the 210  
Freeway to the California off ramp continue to  
Arlington Dr. Make right. Bring lunch.

### NOV 30th - COBB ESTATE ALTADENA LAKE AVE & E LOMA

210 Freeway to Lake Ave. off ramp north to the very top.  
No rest rooms. Rest rooms at Farnsworth Park 3 blocks  
to the south. Bring Lunch.

## SHOWS

---

### 49th Annual Watercolor West International Juried Exhibition

October 14 - December 17, 2017  
Reception: Saturday, October 14, 5-7pm

Wen - Sun  
Brea Civic and Cultural Center  
1 Civic Center Circle

## SHOWS

---

For the past few years we have been holding our  
Anniversary Show at Chaffey Community Museum of Art.  
This has been a wonderful relationship. The staff at CCMA  
take care of hanging the show, publicity and the reception  
arrangements, saving MVAL time and money.  
In appreciation the board votes to give a contribution to  
CCMA each year.  
Pete received this lovely thank you letter from their board  
president.

Dear Pete and members of MVAL,

On behalf of the board of directors of the Chaffey Commu-  
nity Museum of Art, may I express our deep appreciation  
for MVAL's donation of \$1000 to CCMA. We look forward to  
hosting your member exhibition each year as it brings an  
exhibition of very high caliber to CCMA. It is a pleasure to  
work with MVAL members to bring such an outstanding  
exhibit to the regional area.

We appreciate the strong and beneficial relationship that  
has been established between CCMA and MVAL and look  
forward to continuing it far into the future.

Thank you again for MVAL's support of CCMA, which en-  
ables CCMA to bring the gift of visual arts to the Inland  
region.

Yours truly,  
Nancy DeDiemar  
CCMA Board President

Pete,  
The exhibition and the working relationship grows better  
and better with each passing year. Please express CCMA's  
gratitude to your board and members.  
Nancy

## ARTIST NEWS

---

**Lynne Fearman** was the Gold Medal winner at the  
California Art League Show, "Glow", in San Fernando Valley  
in October for her painting "California Live Oak".

# Dale Laitinen Workshop

## February 22-24, 2018

### Shape-Shifting, Making the Invisible Visible

We will concentrate on discovering the underlying design elements in a chosen subject that are the basis for powerful landscapes.



Participants are encouraged to bring photo subject matter of rugged landscapes preferably Something with rocks and cliffs with either sea coast cliffs or Sierra mountain landscapes. Strong shadow patterns make the best for strong painting subjects.

**Dale Laitinen** has been painting for over forty years with thirty five of those in watercolor. He is a signature member of the National Watercolor Society, and Watercolor West. He is a graduate of Modesto Junior College and San Jose State University with a BA in. He is a past juror of many national and regional exhibitions including Watercolor West, Kentucky Watercolor Society, Utah Watercolor Society, Watercolor Society of Oregon, and many others..



### Dale Laitinen Workshop

#### Shape-Shifting, Making the Invisible Visible

This is a three day workshop, for beginners to advanced intermediate. A workshop supply list will be sent when Registration is received.

**Dates:** Thursday through Saturday, February, 22-24

10:00am to 4:00pm One hour for lunch.

**Location:** Church of Good Shepherd Community Room

400 West Duarte Road, Arcadia, CA 91007

**Fee:** \$325 MVAL Members / \$350 Non-Members.

A **deposit** of \$100 must be submitted with registration by February 2, 2018. **Balance due** February 16, 2018

**No Refunds** after February 16, 2018.

#### REGISTRATION

(Check payable to: *Mid-Valley Arts League*)

NAME \_\_\_\_\_

ADDRESS \_\_\_\_\_

CITY/ZIP \_\_\_\_\_

PHONE \_\_\_\_\_

EMAIL \_\_\_\_\_

#### Dale Laitinen Workshop, February 22-24 (Thursday-Saturday)

Enclosed is my check for: \$ \_\_\_\_\_

Check one: ☐ MVAL Member ☐ Non Member

Mail to: John Taggart, 8472 E. Woodlawn Avenue, San Gabriel CA 91775

7 Questions: 626.840.6434 / jtag@sbcglobal.net



## THURSDAYS EN PLEIN AIRE

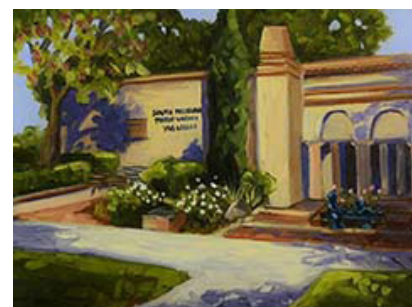
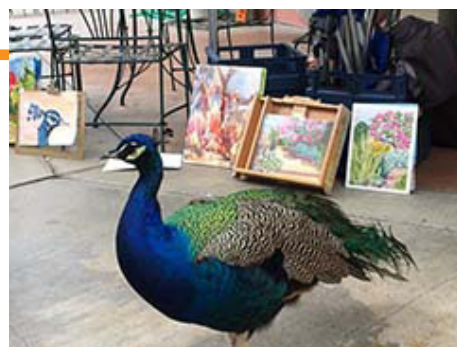
Needing something to fill this page, we are sharing some pictures from our Thursday paint out group. This is an open group, it is not a requirement to be an MVAL member to participate, but we have gotten a lot of new members because they met this group first!



Drew Foster



Debbie Thornhill



Elisa Arancibia



Lynne Fearman



Mary Gilman



Sherry Schmidt

## WATERCOLOR WEST SHOW

There is a lot of overlap of membership between Watercolor West and MVAL. The top picture is the WW Board. Please let me know if you have a painting in this show or have won an award!

Joyce Nunamaker  
Editor

